

hertz

K O M P R E S S O R E N

HGS

HGS 3 & 4 & 5

HGS 7D

HGS 7 & 10

HGS 15 & 20

SPARE PART LIST



KEEP FOR FUTURE REFERENCE

INDEX

| | |
|---------------------|-------|
| HGS 3 & 4 & 5 | 3-14 |
| HGS 7D | 15-20 |
| HGS 7 & 10 | 21-32 |
| HGS 15 & 20 | 33-44 |

PART ORDER PROCEDURE

Any part that needs to be changed must be provided from us or our authorized supplier. Part orders have to include:

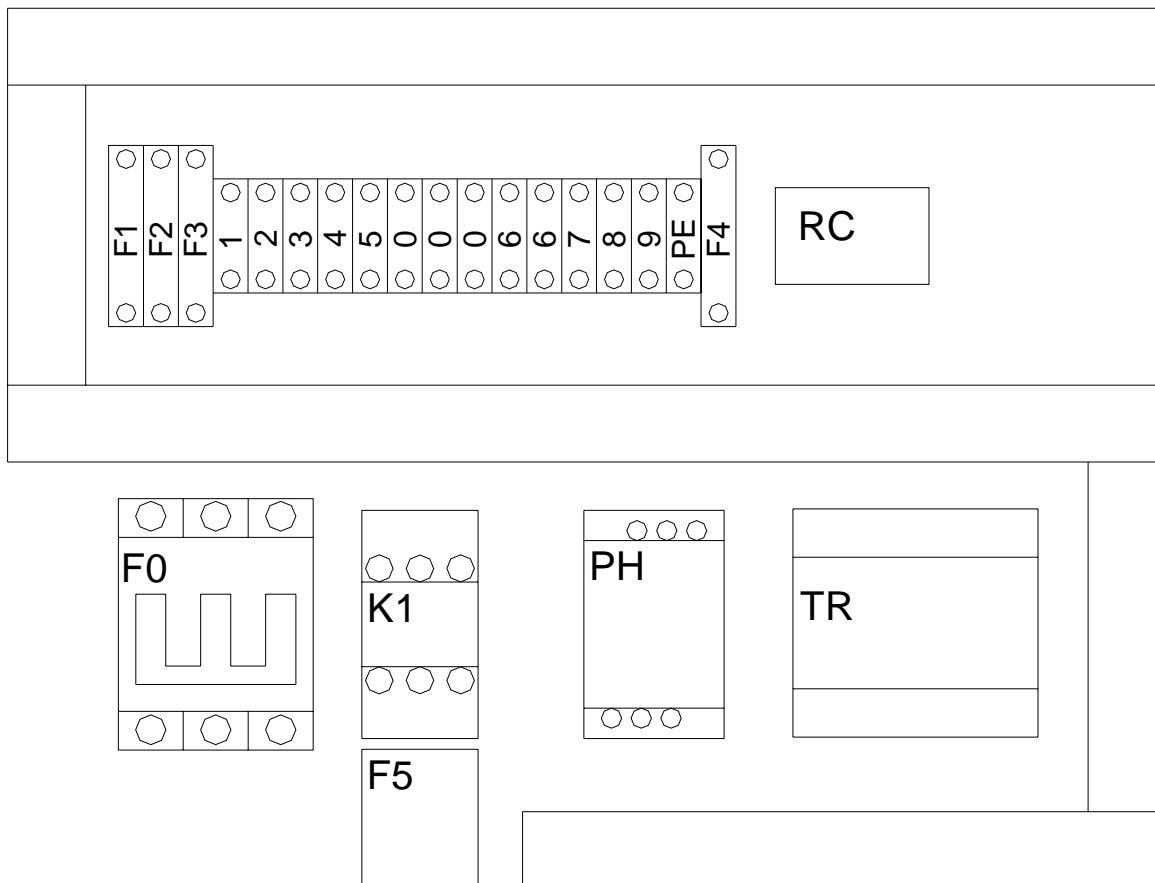
- Compressor Type and Serial Number (you can find this information on the name plate of compressor)
- Part Number and quantity of ordered spare part.

At own unquestionable judgement, HERTZ KOMPRESSOREN reserves the authority to make any modification at any time and without notice.

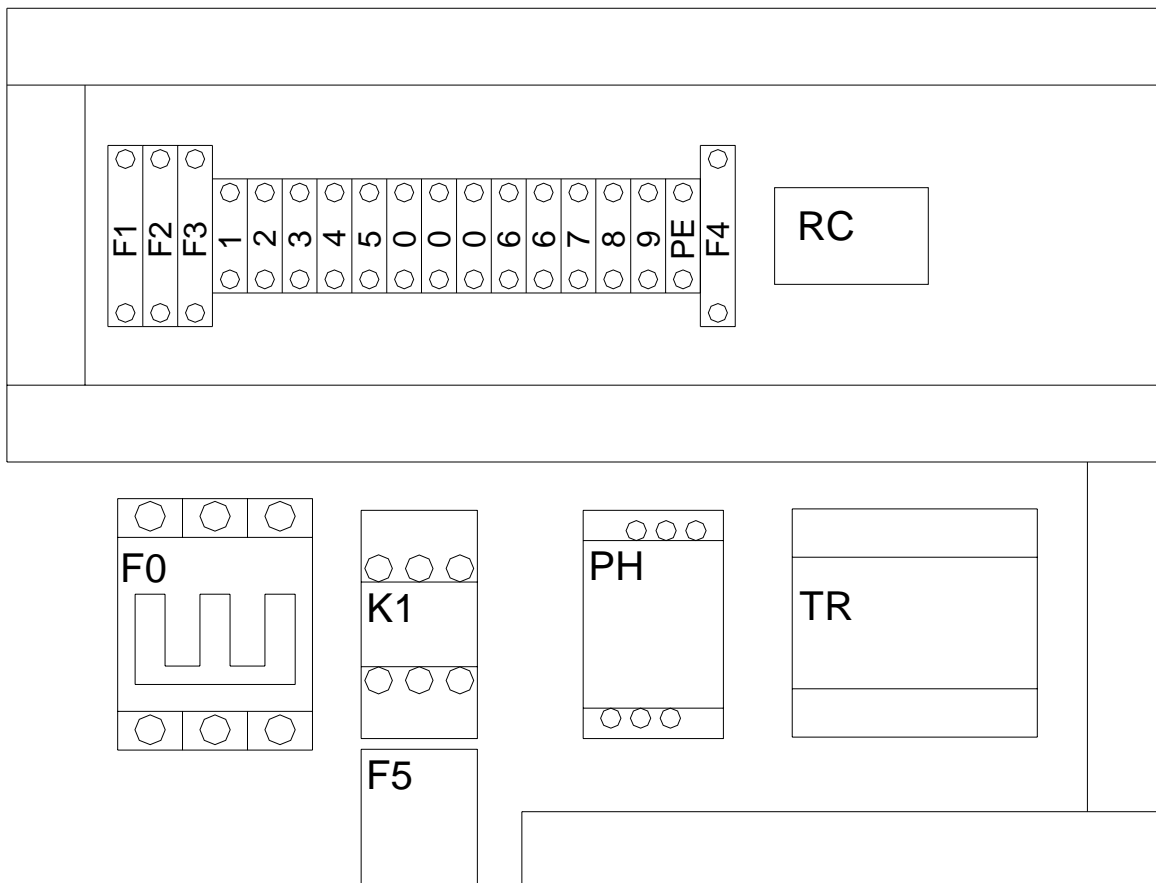
HGS 3 & 4 & 5

INDEX

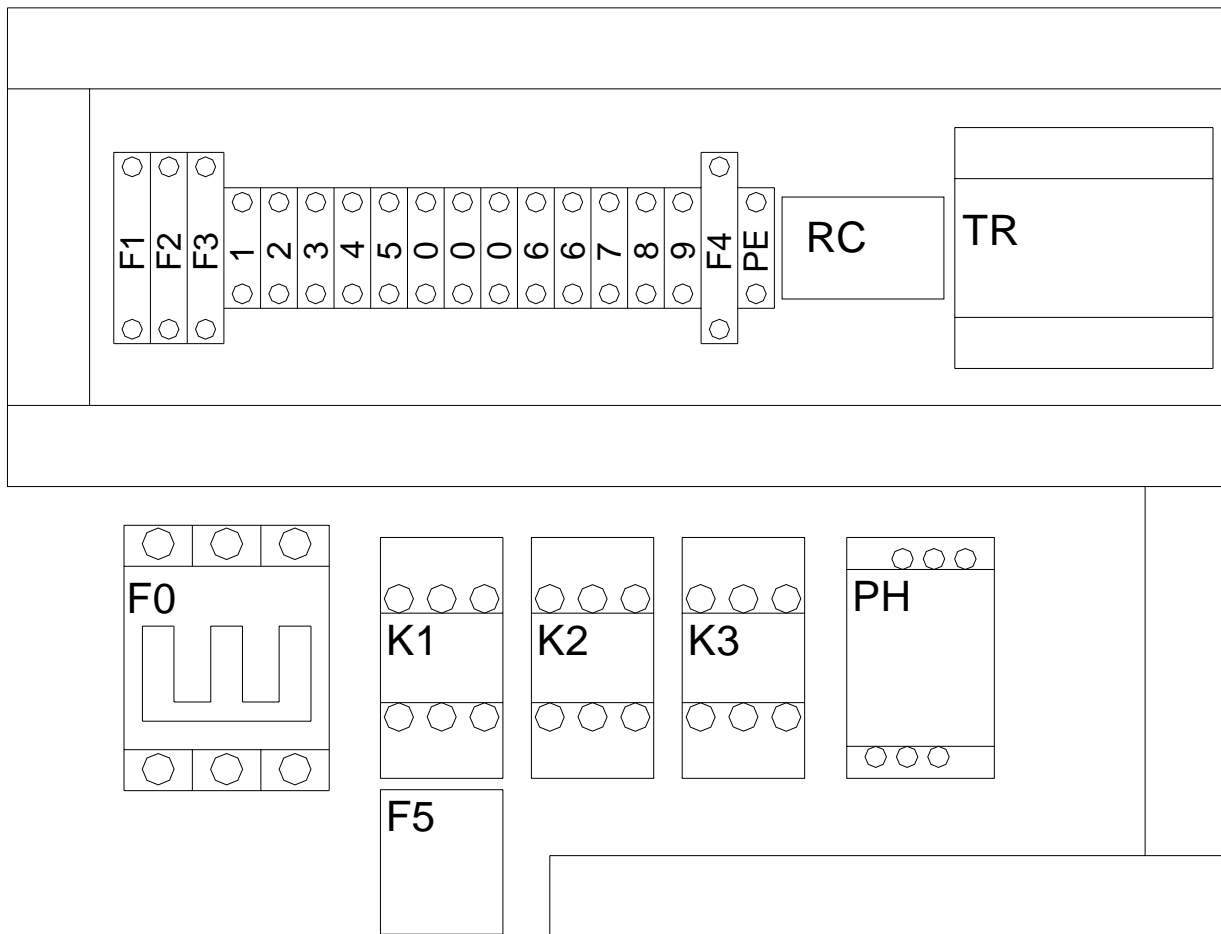
| | | |
|-----|---|----|
| 1.1 | ELECTRIC BOX - HGS 3 | 4 |
| 1.2 | ELECTRIC BOX - HGS 4 | 5 |
| 1.3 | ELECTRIC BOX - HGS 5 | 6 |
| 2.1 | DRIVING SYSTEM - HGS 3 | 7 |
| 2.2 | DRIVING SYSTEM - HGS 4 | 8 |
| 2.3 | DRIVING SYSTEM - HGS 5 | 9 |
| 3.0 | INTAKE SYSTEM - HGS 3 / 4 / 5 | 10 |
| 4.0 | PRESSURE SYSTEM - HGS 3 / 4 / 5 | 11 |
| 5.1 | COOLING SYSTEM - HGS 3 / 4 / 5 | 12 |
| 5.2 | COOLING SYSTEM (WITHOUT RECEIVER) - HGS 3 / 4 / 5 | 13 |
| 6.0 | AIR RECEIVER & CANOPY - HGS 3 / 4 / 5 | 14 |



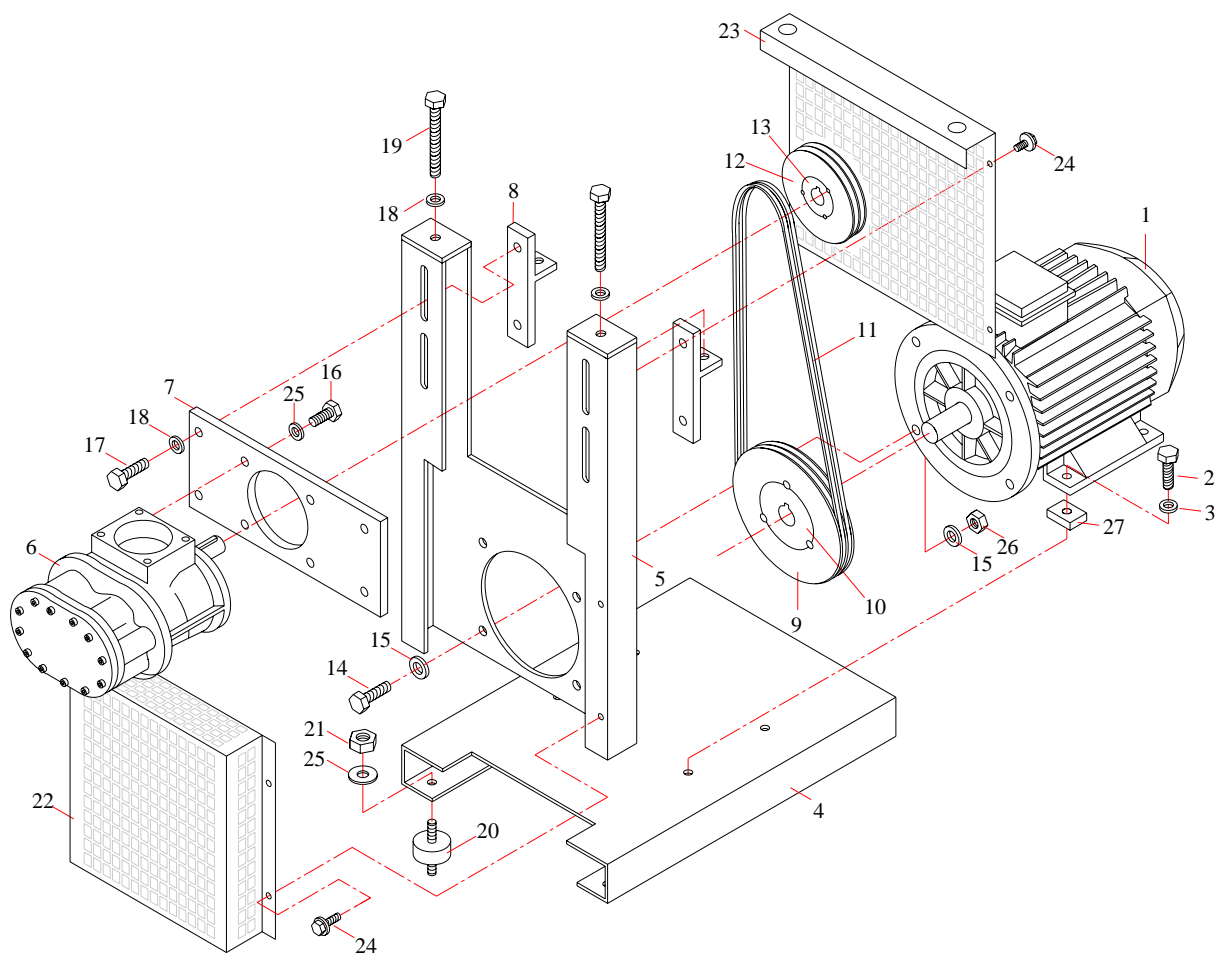
| REF. | PART NAME | COD. | QTY. |
|-----------------|------------------------------|--------------|------|
| L1-L2-L3 | PHASES | - | - |
| PE | PROTECTIVE EARTH | 0315 1079 00 | 1 |
| S1 | MAIN SWITCH (CUSTOMERS SIDE) | - | - |
| F0 | MAIN INLET FUSE | 1600 1400 00 | 1 |
| F0 | MAIN LOAD SEPERATOR | 1312 2182 01 | 1 |
| K1 | CONTACTOR MAIN | 1600 1101 00 | 1 |
| F5 | OVERLOAD RELAY MAIN MOTOR | 1600 1205 00 | 1 |
| M1 | MAIN MOTOR | 1312 1004 02 | 1 |
| PH | PHASES CONTROLLER UNIT | 1312 3051 00 | 1 |
| F1-F2 | FUSE TRANSFORMER INLET | 1312 2180 03 | 2 |
| F3 | FUSE TRANSFORMER 220 VAC | 1312 2180 03 | 1 |
| F4 | FUSE TRANSFORMER 12 VAC | 1312 2180 04 | 1 |
| F1-F2- F3-F4 | TERMINAL WITH FUSE | 1312 2176 01 | 4 |
| TR | TRANSFORMER | 1312 2290 01 | 1 |
| RC | LINE RC FILTER | 1312 2001 00 | 1 |
| Y1 | SOLENOID VALVE LOAD CONTROL | - | - |
| S2 | PRESSURE SWITCH | 1312 3001 01 | 1 |
| TMP | TEMPERATURE SENSOR | 1312 2052 00 | 1 |
| KU | CONTROLLER UNIT | 1314 2171 14 | 1 |
| X1 | TERMINAL (STARTER BOX) | 1312 2227 00 | 14 |
| X2 | TERMINAL (CONTROLLER UNIT) | - | - |



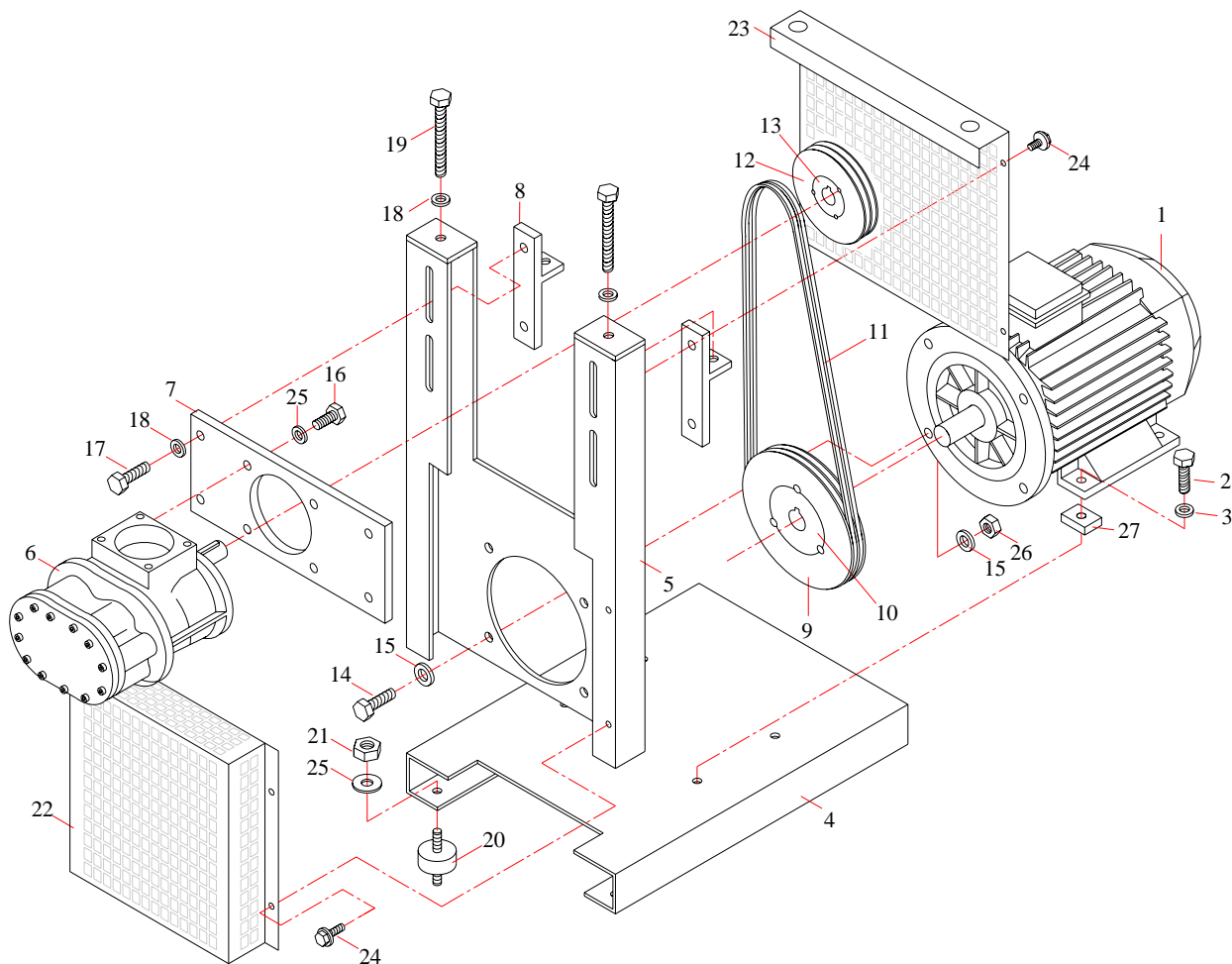
| REF. | PART NAME | COD. | QTY. |
|-----------------|------------------------------|--------------|------|
| L1-L2-L3 | PHASES | - | - |
| PE | PROTECTIVE EARTH | 0315 1079 00 | 1 |
| S1 | MAIN SWITCH (CUSTOMERS SIDE) | - | - |
| F0 | MAIN INLET FUSE | 1600 1400 00 | 1 |
| F0 | MAIN LOAD SEPERATOR | 1312 2182 01 | 1 |
| K1 | CONTACTOR MAIN | 1600 1101 00 | 1 |
| F5 | OVERLOAD RELAY MAIN MOTOR | 1600 1206 00 | 1 |
| M1 | MAIN MOTOR | 1312 1005 03 | 1 |
| PH | PHASES CONTROLLER UNIT | 1312 3051 00 | 1 |
| F1-F2 | FUSE TRANSFORMER INLET | 1312 2180 03 | 2 |
| F3 | FUSE TRANSFORMER 220 VAC | 1312 2180 03 | 1 |
| F4 | FUSE TRANSFORMER 12 VAC | 1312 2180 04 | 1 |
| F1-F2- F3-F4 | TERMINAL WITH FUSE | 1312 2176 01 | 4 |
| TR | TRANSFORMER | 1312 2290 01 | 1 |
| RC | LINE RC FILTER | 1312 2001 00 | 1 |
| Y1 | SOLENOID VALVE LOAD CONTROL | - | - |
| S2 | PRESSURE SWITCH | 1312 3001 01 | 1 |
| TMP | TEMPERATURE SENSOR | 1312 2052 00 | 1 |
| KU | CONTROLLER UNIT | 1314 2171 14 | 1 |
| X1 | TERMINAL (STARTER BOX) | 1312 2227 00 | 14 |
| X2 | TERMINAL (CONTROLLER UNIT) | - | - |



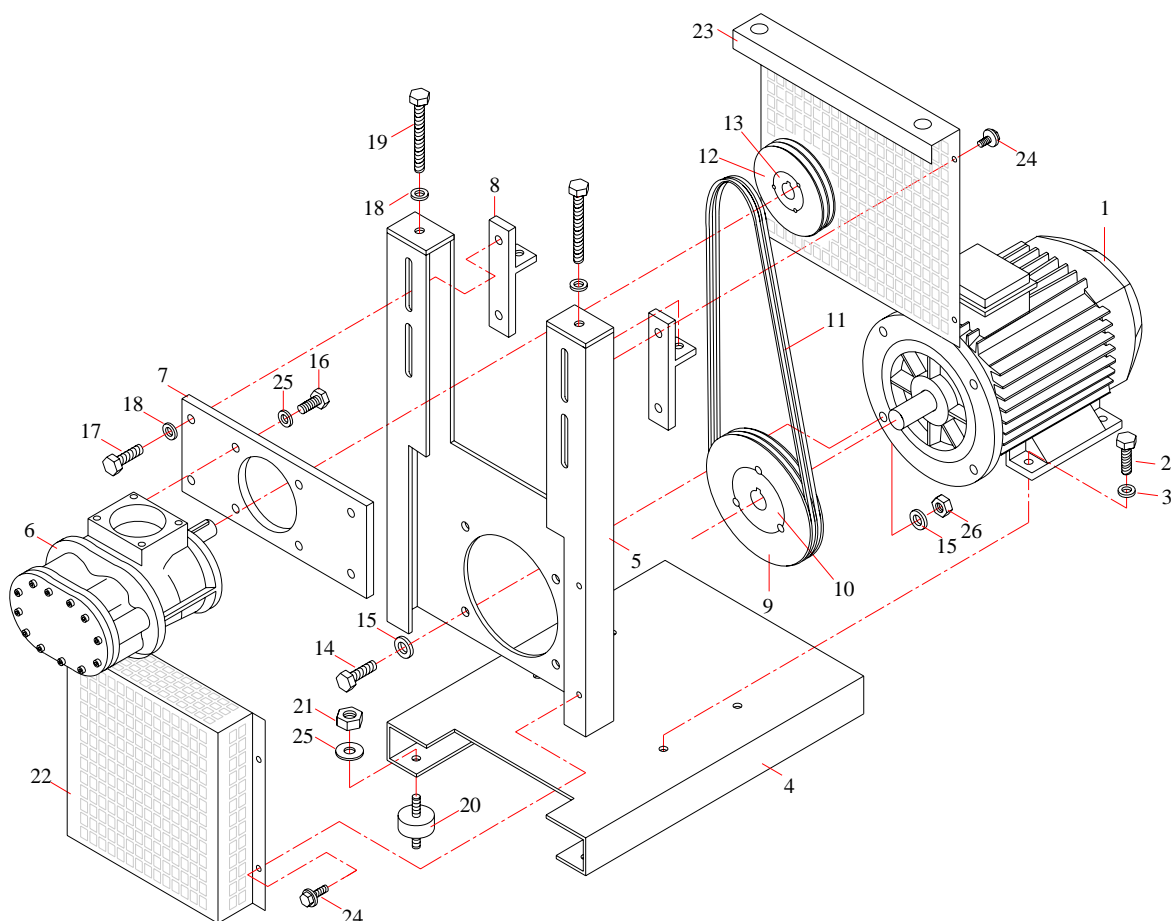
| REF. | PART NAME | COD. | QTY. |
|-------------|-----------------------------|--------------|------|
| L1-L2-L3 | PHASES | - | - |
| PE | PROTECTIVE EARTH | 0315 1079 00 | 1 |
| S1 | MAIN SWITCH | - | - |
| F0 | MAIN INLET FUSE | 1600 1400 00 | 1 |
| F0 | MAIN LOAD SEPERATOR | 1312 2182 01 | 1 |
| K1 | CONTACTOR MAIN | 1600 1101 00 | 1 |
| K2 | CONTACTOR DELTA | 1600 1101 00 | 1 |
| K3 | CONTACTOR STAR | 1600 1101 00 | 1 |
| F5 | OVERLOAD RELAY MAIN MOTOR | 1600 1204 00 | 1 |
| M1 | MAIN MOTOR | 1312 1006 02 | 1 |
| PH | PHASES CONTROLLER UNIT | 1312 3051 00 | 1 |
| F1-F2 | FUSE TRANSFORMER INLET | 1312 2180 03 | 2 |
| F3 | FUSE TRANSFORMER | 1312 2180 03 | 1 |
| F4 | FUSE TRANSFORMER | 1312 2180 04 | 1 |
| F1-F2-F3-F4 | TERMINAL WITH FUSE | 1312 2176 01 | 4 |
| TR | TRANSFORMER | 1312 2290 01 | 1 |
| RC | LINE RC FILTER | 1312 2001 00 | 1 |
| Y1 | SOLENOID VALVE LOAD CONTROL | - | - |
| S2 | PRESSURE SWITCH | 1312 3001 01 | 1 |
| TMP | TEMPERATURE SENSOR | 1312 2052 00 | 1 |
| KU | CONTROLLER UNIT | 1314 2171 14 | 1 |
| X1 | TERMINAL (STARTER BOX) | 1312 2227 00 | 14 |
| X2 | TERMINAL (CONTROLLER UNIT) | - | - |



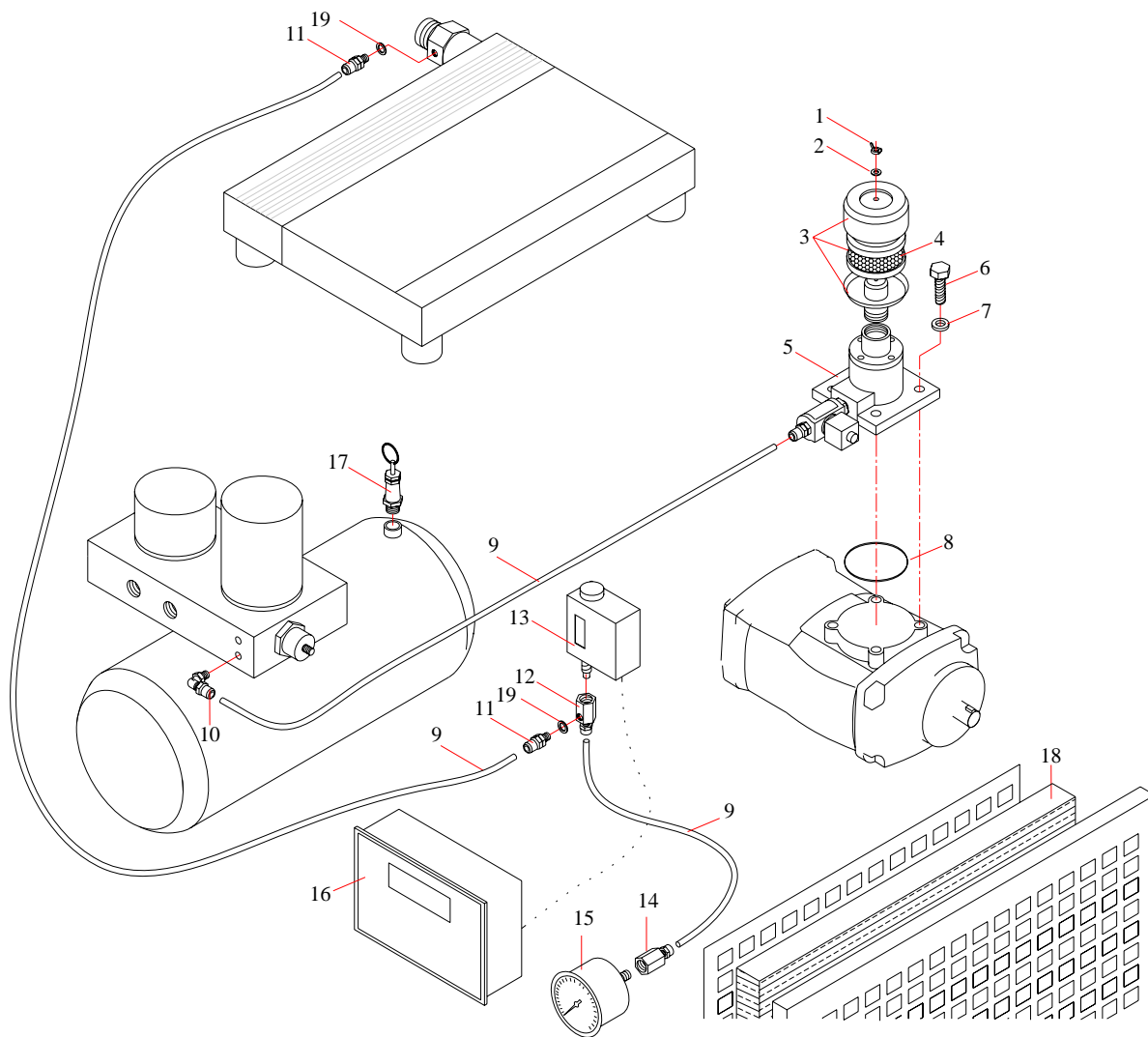
| REF. | PART NAME | COD. | QTY. |
|------|-----------------------|--------------|------|
| 1 | MOTOR | 1312 1004 02 | 1 |
| 2 | BOLT | 0313 1217 00 | 4 |
| 3 | WASHER | 2313 1390 00 | 4 |
| 4 | FRAME (MOTOR) | 1214 2345 00 | 1 |
| 5 | FRAME (AIREND UNIT) | 1214 2288 00 | 1 |
| 6 | AIREND UNIT | 1321 1000 02 | 1 |
| 7 | ADAPTOR FLANGE | 1414 2205 02 | 1 |
| 8 | TENSION PART | 1214 2204 00 | 2 |
| 9 | PULLEY MOTOR (7 Bar) | 1312 3991 00 | 1 |
| 10 | BUSH MOTOR (7 Bar) | 1312 4094 00 | 1 |
| 11 | BELT | 1312 4200 00 | 1 |
| 12 | PULLEY AIREND (7 Bar) | 1312 3990 00 | 1 |
| 13 | BUSH AIREND (7 Bar) | 1312 4095 00 | 1 |
| 14 | BOLT | 0313 1224 00 | 4 |
| 15 | WASHER | 0313 1357 00 | 8 |
| 16 | BOLT | 0312 1246 00 | 4 |
| 17 | BOLT | 2313 1211 00 | 4 |
| 18 | WASHER | 0313 1353 00 | 6 |
| 19 | BOLT | 2313 1259 00 | 2 |
| 20 | VIBRATION PAD | 1213 1790 00 | 4 |
| 21 | NUT | 0313 1305 00 | 4 |
| 22 | GUARD (PULLEY MOTOR) | 1411 2005 00 | 1 |
| 23 | GUARD (PULLEY AIREND) | 1411 2005 01 | 1 |
| 24 | BOLT | 0313 1204 01 | 6 |
| 25 | WASHER | 2313 1381 00 | 8 |
| 26 | NUT | 0313 1306 00 | 4 |
| 27 | BLOCK | - | 4 |



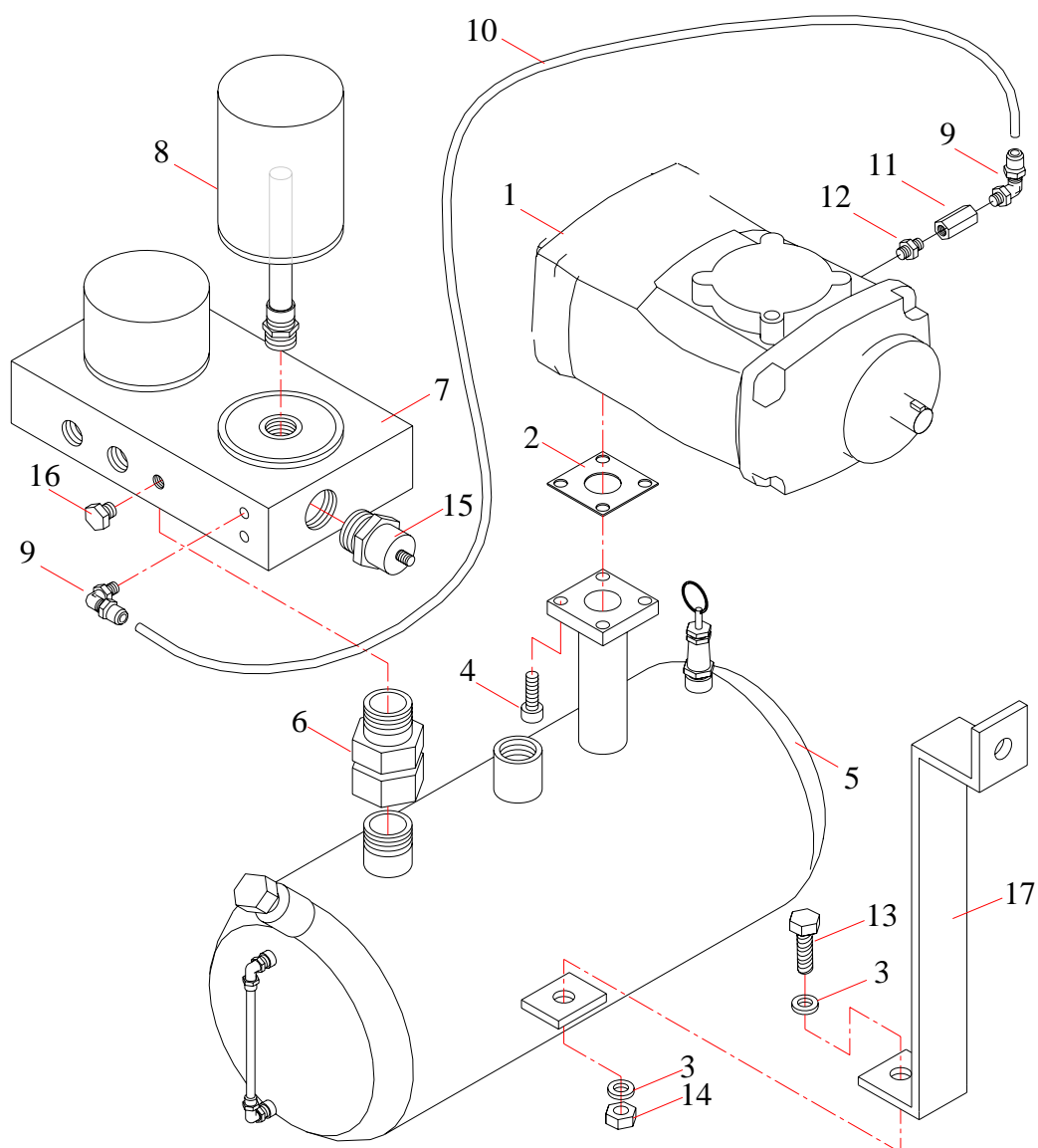
| REF. | PART NAME | COD. | QTY. |
|------|------------------------|--------------|------|
| 1 | MOTOR | 1312 1005 03 | 1 |
| 2 | BOLT | 0313 1217 00 | 4 |
| 3 | WASHER | 2313 1390 00 | 4 |
| 4 | FRAME (MOTOR) | 1214 2345 00 | 1 |
| 5 | FRAME (AIREND UNIT) | 1214 2288 00 | 1 |
| 6 | AIREND UNIT | 1321 1000 02 | 1 |
| 7 | ADAPTOR FLANGE | 1414 2205 02 | 1 |
| 8 | TENSION PART | 1214 2204 00 | 2 |
| 9 | PULLEY MOTOR (7 Bar) | 1312 3986 00 | 1 |
| 9 | PULLEY MOTOR (10 Bar) | 1312 3991 00 | 1 |
| 10 | BUSH MOTOR (7-10 Bar) | 1312 4094 00 | 1 |
| 11 | BELT | 1312 4200 00 | 1 |
| 12 | PULLEY AIREND (7 Bar) | 1312 3985 00 | 1 |
| 12 | PULLEY AIREND (10 Bar) | 1312 3990 00 | 1 |
| 13 | BUSH AIREND (7 Bar) | 1312 4095 01 | 1 |
| 13 | BUSH AIREND (10 Bar) | 1312 4095 00 | 1 |
| 14 | BOLT | 0313 1224 00 | 4 |
| 15 | WASHER | 0313 1357 00 | 8 |
| 16 | BOLT | 0312 1246 00 | 4 |
| 17 | BOLT | 2313 1211 00 | 4 |
| 18 | WASHER | 0313 1353 00 | 6 |
| 19 | BOLT | 2313 1259 00 | 2 |
| 20 | VIBRATION PAD | 1213 1790 00 | 4 |
| 21 | NUT | 0313 1305 00 | 4 |
| 22 | GUARD (PULLEY MOTOR) | 1411 2005 00 | 1 |
| 23 | GUARD (PULLEY AIREND) | 1411 2005 01 | 1 |
| 24 | BOLT | 0313 1204 01 | 6 |
| 25 | WASHER | 2313 1381 00 | 4 |
| 26 | NUT | 0313 1306 00 | 4 |
| 27 | BLOCK | - | 4 |



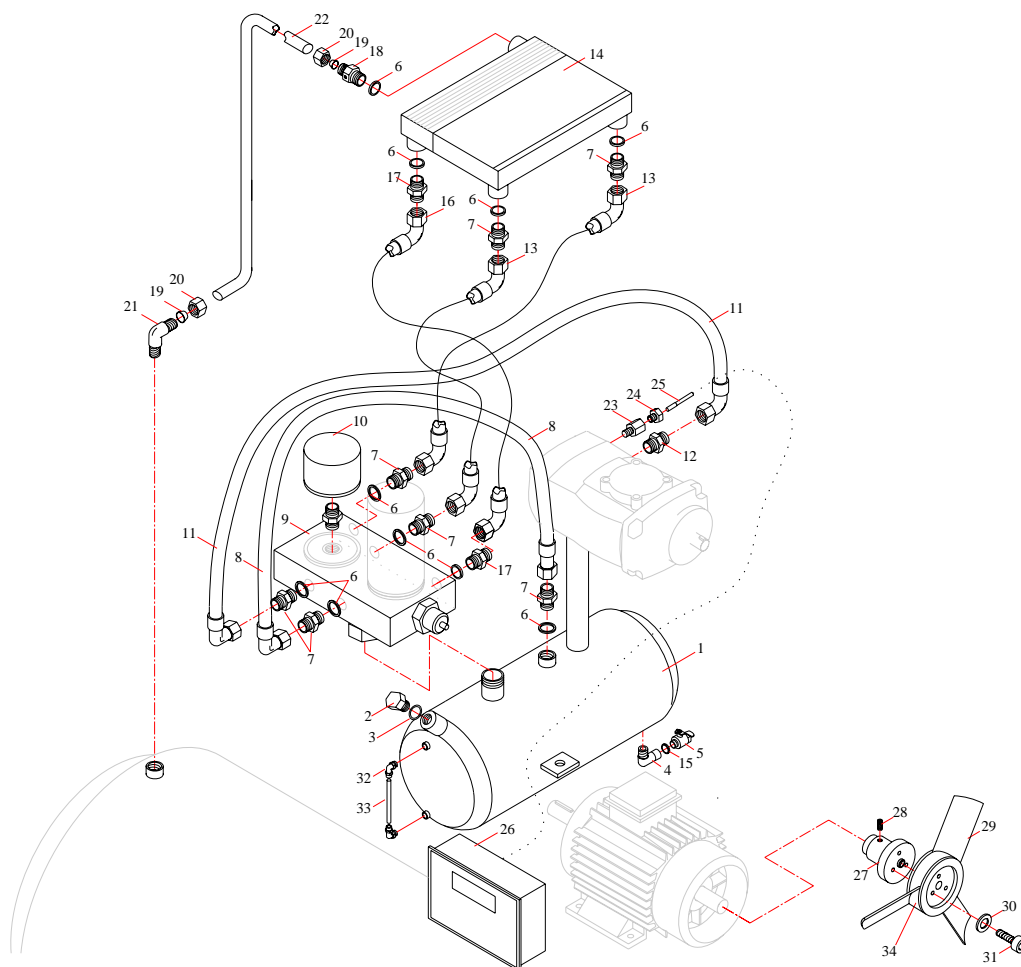
| REF. | PART NAME | COD. | QTY. |
|------|--------------------------|--------------|------|
| 1 | MOTOR | 1312 1006 02 | 1 |
| 2 | BOLT | 0313 1217 00 | 4 |
| 3 | WASHER | 2313 1390 00 | 4 |
| 4 | FRAME (MOTOR) | 1214 2345 00 | 1 |
| 5 | FRAME (AIREND UNIT) | 1214 2288 00 | 1 |
| 6 | AIREND UNIT | 1321 1000 02 | 1 |
| 7 | ADAPTOR FLANGE | 1414 2205 02 | 1 |
| 8 | TENSION PART | 1214 2204 00 | 2 |
| 9 | PULLEY MOTOR (7 Bar) | 1312 3991 00 | 1 |
| 9 | PULLEY MOTOR (10 Bar) | 1312 3984 00 | 1 |
| 9 | PULLEY MOTOR (13 Bar) | - | 1 |
| 10 | BUSH MOTOR (7-10-13 Bar) | 1312 4094 00 | 1 |
| 11 | BELT (7-10 Bar) | 1312 4200 00 | 1 |
| 11 | BELT (13 Bar) | 1312 4201 00 | 1 |
| 12 | PULLEY AIREND (7 Bar) | 1312 3990 00 | 1 |
| 12 | PULLEY AIREND (10 Bar) | 1312 3983 00 | 1 |
| 12 | PULLEY AIREND (13 Bar) | - | 1 |
| 13 | BUSH AIREND (7-10 Bar) | 1312 4095 00 | 1 |
| 13 | BUSH AIREND (13 Bar) | 1312 4076 01 | 1 |
| 14 | BOLT | 0313 1224 00 | 4 |
| 15 | WASHER | 0313 1357 00 | 8 |
| 16 | BOLT | 0312 1246 00 | 4 |
| 17 | BOLT | 2313 1211 00 | 4 |
| 18 | WASHER | 0313 1353 00 | 6 |
| 19 | BOLT | 2313 1259 00 | 2 |
| 20 | VIBRATION PAD | 1213 1790 00 | 4 |
| 21 | NUT | 0313 1305 00 | 4 |
| 22 | GUARD (PULLEY MOTOR) | 1411 2005 00 | 1 |
| 23 | GUARD (PULLEY AIREND) | 1411 2005 01 | 1 |
| 24 | BOLT | 0313 1204 01 | 6 |
| 25 | WASHER | 2313 1381 00 | 8 |
| 26 | NUT | 0313 1306 00 | 4 |



| REF. | PART NAME | COD. | QTY. |
|------|-----------------------|--------------|------|
| 1 | NUT | 1313 1325 00 | 1 |
| 2 | WASHER | 0313 1352 00 | 1 |
| 3 | FILTER (COMPLETE) | 2311 1222 00 | 1 |
| 4 | FILTER ELEMENT | 2311 1221 00 | 1 |
| 5 | INTAKE VALVE | 1321 1010 00 | 1 |
| 6 | NUT | 0313 1208 00 | 4 |
| 7 | WASHER | 0313 1353 00 | 4 |
| 8 | O'RING | 1313 1670 00 | 1 |
| 9 | TUBE (PA) | 1313 1044 00 | 3 |
| 10 | ELBOW | 1313 1121 00 | 1 |
| 11 | CONNECTOR | 1313 1125 00 | 2 |
| 12 | ADAPTOR | 1313 1451 00 | 1 |
| 13 | PRESSURE SWITCH | 1312 3001 01 | 1 |
| 14 | ADAPTOR | 1313 1452 00 | 1 |
| 15 | PRESSURE GAUGE | 1312 3010 00 | 1 |
| 16 | CONTROLLER UNIT | 1314 2171 14 | 1 |
| 17 | SAFETY VALVE (7 Bar) | 0311 1300 00 | 1 |
| 17 | SAFETY VALVE (10 Bar) | 0311 1303 00 | 1 |
| 17 | SAFETY VALVE (13 Bar) | 0311 1304 00 | 1 |
| 18 | PANEL FILTER | 0311 1220 00 | 1 |
| 19 | WASHER | 1313 1372 00 | 2 |



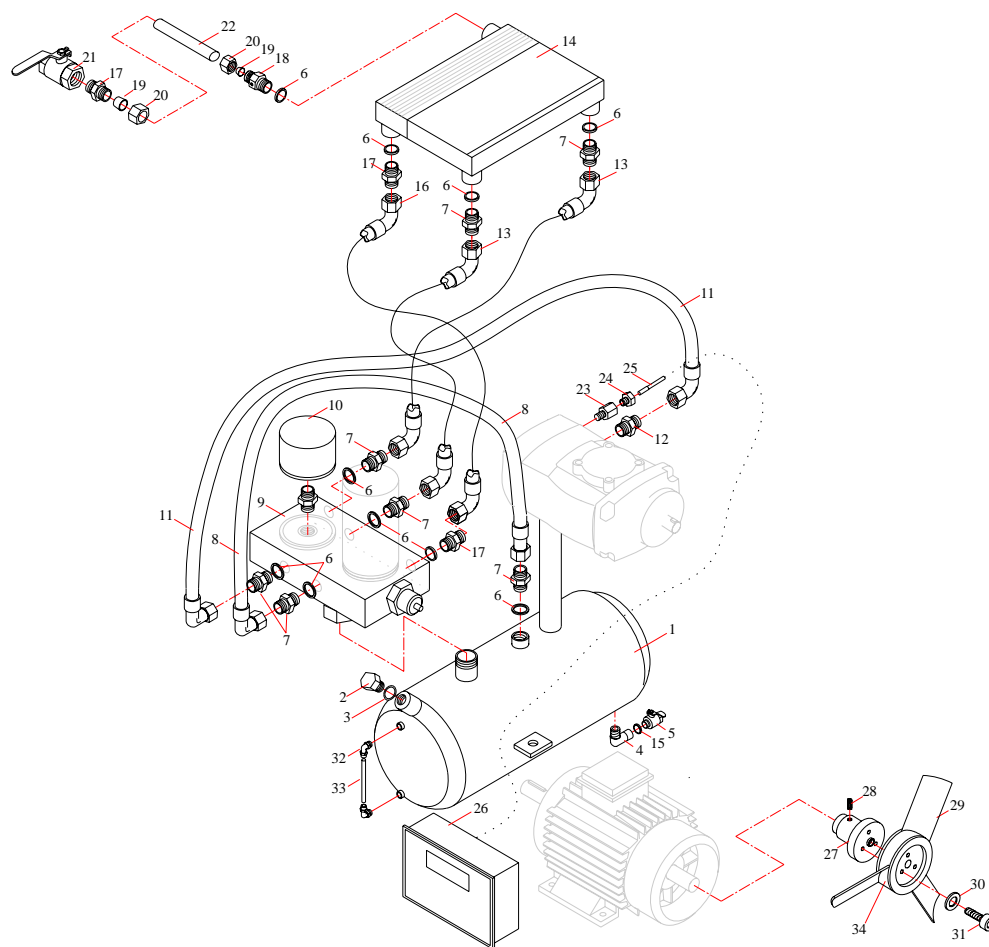
| REF. | PART NAME | COD. | QTY. |
|------|---------------------|--------------|------|
| 1 | AIREND UNIT | 1321 1000 02 | 1 |
| 2 | GASKET | 1313 1598 00 | 1 |
| 3 | WASHER | 0313 1353 00 | 2 |
| 4 | BOLT | 0313 1210 00 | 4 |
| 5 | OIL TANK | 1314 2194 00 | 1 |
| 6 | ADAPTOR | 2313 1128 01 | 1 |
| 7 | MULTIBLOCK | 1321 1124 00 | 1 |
| 8 | SEPARATOR ELEMENT | 1311 1265 00 | 1 |
| 9 | ELBOW | 1313 1121 00 | 2 |
| 10 | TUBA (PA) | 1313 1044 00 | 1 |
| 11 | CHECK VALVE | 2311 1437 00 | 1 |
| 12 | NIPPLE | 2313 1100 00 | 1 |
| 13 | BOLT | 2313 1211 00 | 1 |
| 14 | NUT | 0313 1304 00 | 1 |
| 15 | MIN. PRESSURE VALVE | - | 1 |
| 16 | PLUG | 1214 2297 02 | 1 |
| 17 | SUPPORT | 1314 1212 00 | 1 |



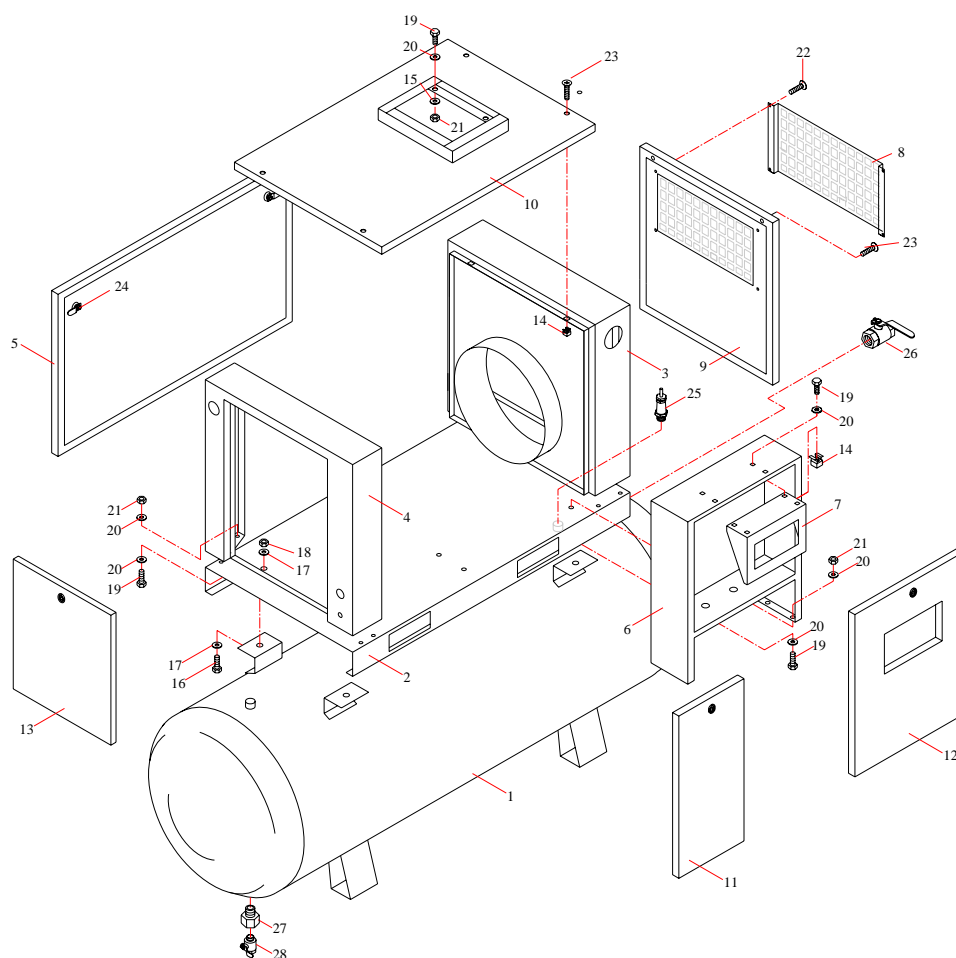
| REF. | PART NAME | COD. | QTY. |
|------|--------------------|--------------|------|
| 1 | OIL TANK | 1314 2194 00 | 1 |
| 2 | PLUG | 1214 2297 01 | 1 |
| 3 | O'RING | 1313 1677 00 | 1 |
| 4 | ELBOW | 0313 1113 00 | 1 |
| 5 | DRAIN VALVE | 0313 1552 00 | 1 |
| 6 | WASHER | 1313 1374 00 | 10 |
| 7 | NIPPLE | 0313 1077 03 | 7 |
| 8 | HOSE | 1313 0902 02 | 1 |
| 9 | MULTIBLOCK | 1321 1124 00 | 1 |
| 10 | OIL FILTER ELEMENT | 1311 1230 00 | 1 |
| 11 | HOSE | 1313 0902 01 | 1 |
| 12 | NIPPLE | 0313 1077 04 | 1 |
| 13 | HOSE | 1313 0902 00 | 2 |
| 14 | COOLER | 1321 1109 00 | 1 |
| 15 | WASHER | 1313 1373 00 | 1 |
| 16 | HOSE | 1313 1002 02 | 1 |
| 17 | NIPPLE | 0313 1072 00 | 2 |
| 18 | NIPPLE | 0313 1073 00 | 1 |
| 19 | THIMBLE | 2313 1476 00 | 2 |
| 20 | NUT | 2313 1300 00 | 2 |
| 21 | ELBOW | 1313 1123 00 | 1 |
| 22 | PIPE | 1313 1389 00 | 1 |
| 23 | PROBE COVER | 1312 3016 04 | 1 |
| 24 | NUT | 1312 3018 00 | 1 |
| 25 | TEMPERATURE PROBE | 1312 3052 00 | 1 |
| 26 | CONTROLLER UNIT | 1314 217114 | 1 |
| 27 | ADAPTOR | 1313 1403 00 | 1 |
| 28 | BOLT | 2313 1260 00 | 1 |
| 29 | FAN BLADE | 1311 1138 03 | 3 |
| 30 | WASHER | 0313 1352 00 | 3 |
| 31 | BOLT | 2313 1236 00 | 3 |
| 32 | ELBOW | 0313 1115 00 | 2 |
| 33 | TUBE (PA) | 1313 1045 00 | 1 |
| 34 | FAN CENTER | 1311 1138 00 | 2 |

5.2 COOLING SYSTEM (WITHOUT RECEIVER)

HGS 3 / 4 / 5



| REF. | PART NAME | COD. | QTY. |
|------|--------------------|--------------|------|
| 1 | OIL TANK | 1314 2194 00 | 1 |
| 2 | PLUG | 1214 2297 01 | 1 |
| 3 | O'RING | 1313 1677 00 | 1 |
| 4 | ELBOW | 0313 1113 00 | 1 |
| 5 | DRAIN VALVE | 0313 1552 00 | 1 |
| 6 | WASHER | 1313 1374 00 | 10 |
| 7 | NIPPLE | 0313 1077 03 | 7 |
| 8 | HOSE | 1313 0902 02 | 1 |
| 9 | MULTIBLOCK | 1321 1124 00 | 1 |
| 10 | OIL FILTER ELEMENT | 1311 1230 00 | 1 |
| 11 | HOSE | 1313 0902 01 | 1 |
| 12 | NIPPLE | 0313 1077 04 | 1 |
| 13 | HOSE | 1313 0902 00 | 2 |
| 14 | COOLER | 1321 1109 00 | 1 |
| 15 | WASHER | 1313 1373 00 | 1 |
| 16 | HOSE | 1313 1002 02 | 1 |
| 17 | NIPPLE | 0313 1072 00 | 3 |
| 18 | NIPPLE | 0313 1073 00 | 1 |
| 19 | THIMBLE | 2313 1476 00 | 2 |
| 20 | NUT | 2313 1300 00 | 2 |
| 21 | VALVE | 0313 1550 00 | 1 |
| 22 | PIPE | 1313 1389 00 | 1 |
| 23 | PROBE COVER | 1312 3016 04 | 1 |
| 24 | NUT | 1312 3018 00 | 1 |
| 25 | TEMPERATURE PROBE | 1312 3052 00 | 1 |
| 26 | CONTROLLER UNIT | 1314 217114 | 1 |
| 27 | ADAPTOR | 1313 1403 00 | 1 |
| 28 | BOLT | 2313 1260 00 | 1 |
| 29 | FAN BLADE | 1311 1138 03 | 3 |
| 30 | WASHER | 0313 1352 00 | 3 |
| 31 | BOLT | 2313 1236 00 | 3 |
| 32 | ELBOW | 0313 1115 00 | 2 |
| 33 | TUBE (PA) | 1313 1045 00 | 1 |
| 34 | FAN CENTER | 1311 1138 00 | 2 |



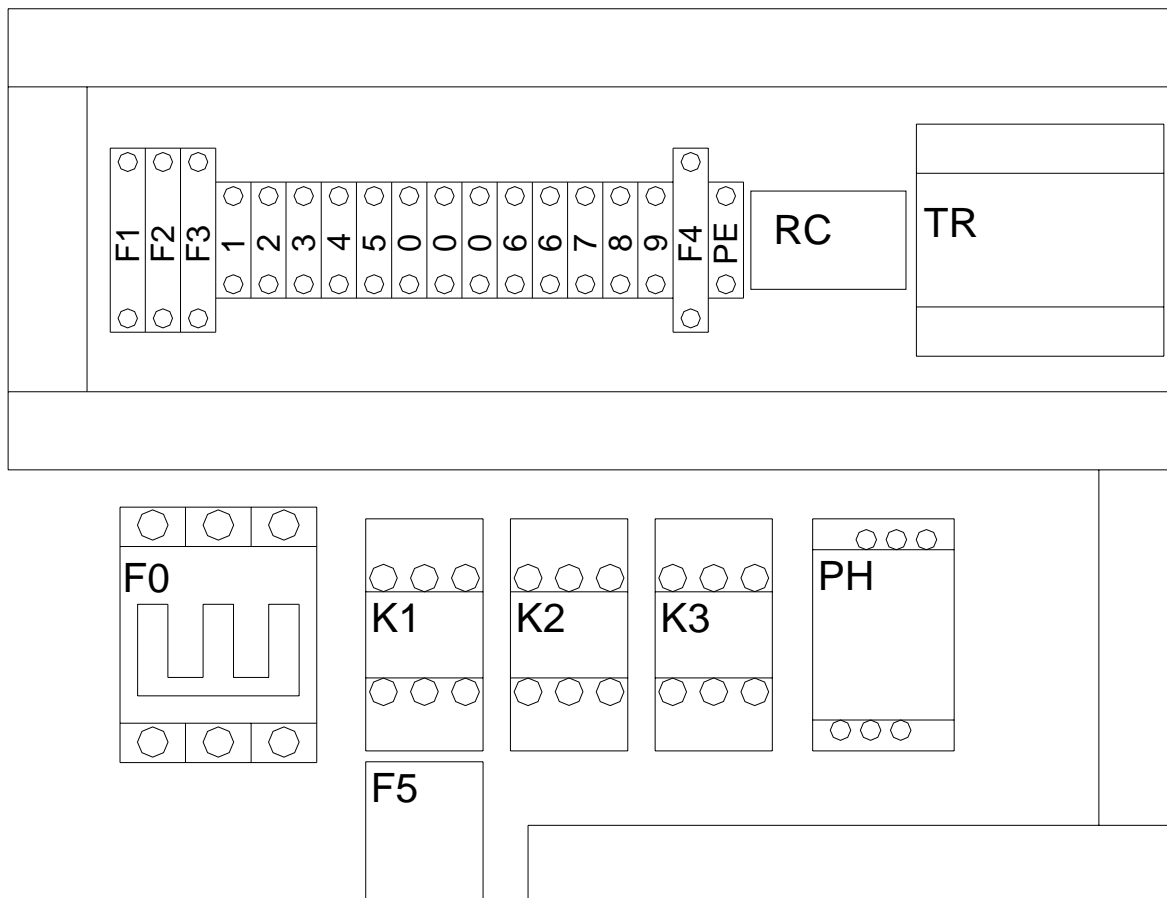
| REF. | PART NAME | COD. | QTY. |
|------|---------------------------|--------------|------|
| 1* | AIR RECEIVER | 0300 2418 00 | 1 |
| 2 | BOTTOM FRAME | 1312 2417 09 | 1 |
| 3 | RIGHT POLE GROUP | 1312 2417 04 | 1 |
| 4 | LEFT POLE GROUP | 1312 2417 10 | 1 |
| 5 | BACK COVER | 1312 2417 07 | 1 |
| 6 | STARTER CABINET | 1312 2417 03 | 1 |
| 7 | PLC BOARD | 1214 2897 03 | 1 |
| 8 | P*RE FILTER COVER | 1312 2417 06 | 1 |
| 9 | FRONT COVER (P*RE FILTER) | 1312 2417 05 | 1 |
| 10 | COVER COOLER | 1312 2417 08 | 1 |
| 11 | FRONT LEFT COVER | 1312 2417 01 | 1 |
| 12 | COVER STARTER CABINET | 1312 2417 00 | 1 |
| 13 | LEFT COVER | 1312 2417 02 | 1 |
| 14 | SQUARE NUT | 1313 1304 00 | 8 |
| 15 | WASHER | 0313 1354 00 | 4 |
| 16* | BOLT | 2313 1216 01 | 4 |
| 17* | WASHER | 2313 1381 00 | 8 |
| 18* | NUT | 0313 1305 00 | 4 |
| 19 | BOLT | 2313 1202 00 | 20 |
| 20 | WASHER | 0313 1352 00 | 36 |
| 21 | NUT | 0313 1303 00 | 16 |
| 22 | SCREW | 1313 1246 00 | 4 |
| 23 | BOLT | 0313 1205 00 | 4 |
| 24 | LOCK | 1314 2025 00 | 5 |
| 25* | SAFETY VALVE (7 Bar) | 0311 1300 00 | 1 |
| 25* | SAFETY VALVE (10 Bar) | 0311 1303 00 | 1 |
| 25* | SAFETY VALVE (13 Bar) | 0311 1304 00 | 1 |
| 26* | VALVE | 0313 1550 00 | 1 |
| 27* | ADAPTOR | 1313 1108 00 | 1 |
| 28* | DRAIN VALVE | 0313 1550 01 | 1 |

(*) THEY ARE NOT USED IN MODEL WITHOUT RECEIVER

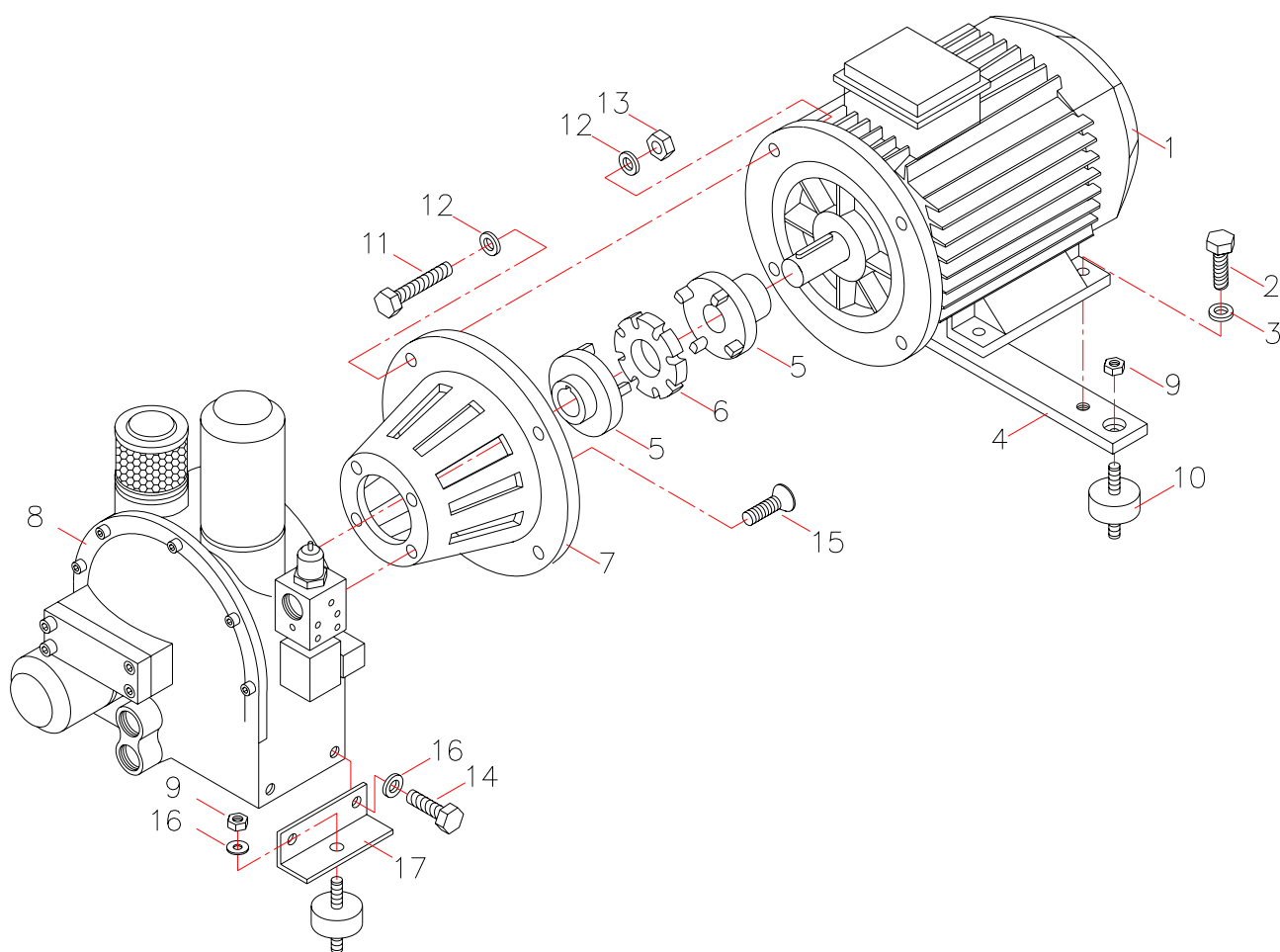
HGS 7D

INDEX

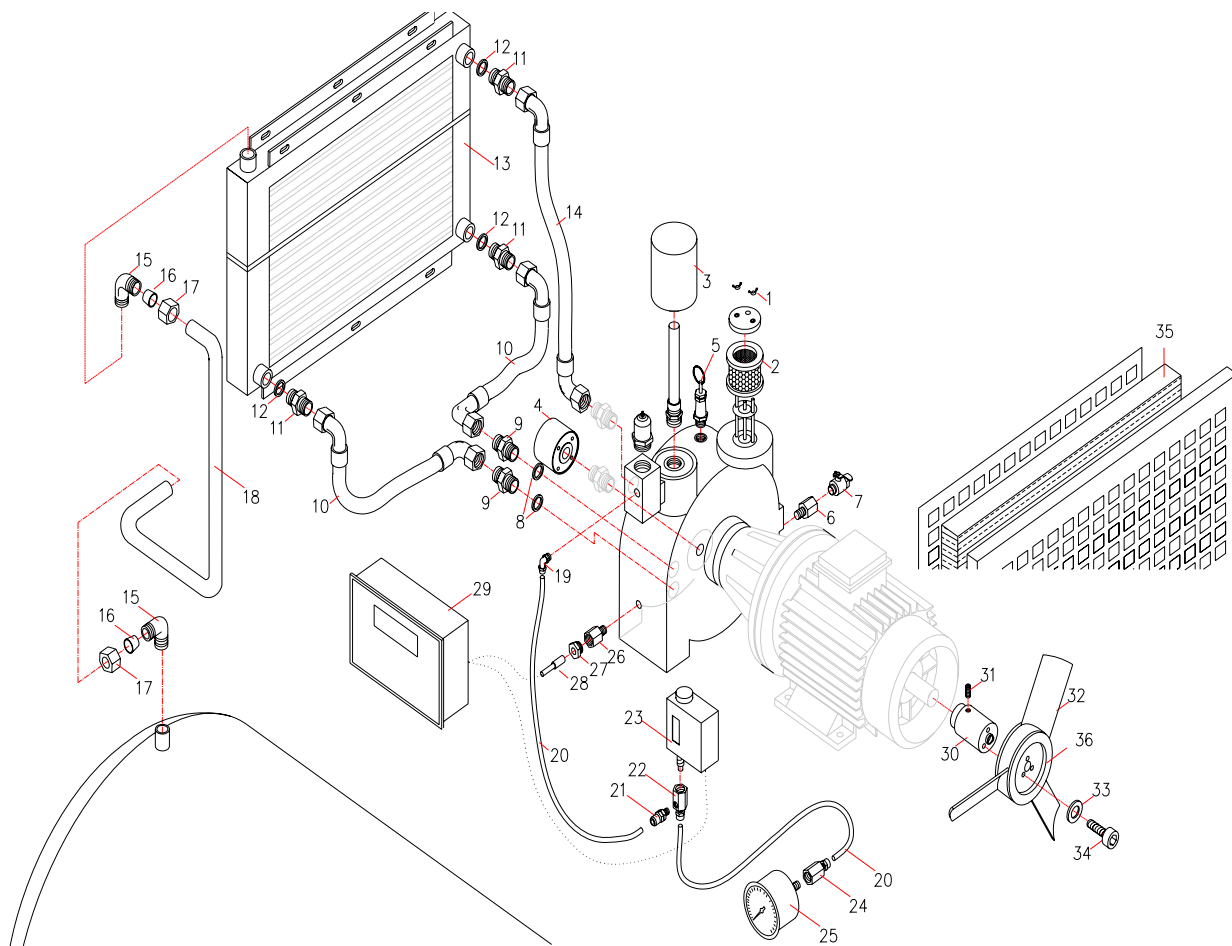
| | | |
|-----|--|----|
| 1.0 | ELECTRIC BOX - HGS 7D | 16 |
| 2.0 | DRIVING SYSTEM - HGS 7D | 17 |
| 3.1 | COMPRESSOR - HGS 7D | 18 |
| 3.2 | COMPRESSOR (WITHOUT RECEIVER) - HGS 7D | 19 |
| 4.0 | AIR RECEIVER & CANOPY - HGS 7D | 20 |



| REF. | PART NAME | COD. | QTY. |
|-------------|-----------------------------|--------------|------|
| L1-L2-L3 | PHASES | - | - |
| PE | PROTECTIVE EARTH | 0315 1079 00 | 1 |
| S1 | MAIN SWITCH | - | - |
| F0 | MAIN INLET FUSE | 1600 1401 00 | 1 |
| F0 | MAIN LOAD SEPERATOR | 1312 2182 01 | 1 |
| K1 | CONTACTOR MAIN | 1600 1101 00 | 1 |
| K2 | CONTACTOR DELTA | 1600 1101 00 | 1 |
| K3 | CONTACTOR STAR | 1600 1101 00 | 1 |
| F5 | OVERLOAD RELAY MAIN MOTOR | 1600 1206 00 | 1 |
| M1 | MAIN MOTOR | 0312 1007 03 | 1 |
| PH | PHASES CONTROLLER UNIT | 1312 3051 00 | 1 |
| F1-F2 | FUSE TRANSFORMER INLET | 1312 2180 03 | 2 |
| F3 | FUSE TRANSFORMER 220 VAC | 1312 2180 03 | 1 |
| F4 | FUSE TRANSFORMER 12 VAC | 1312 2180 04 | 1 |
| F1-F2-F3-F4 | TERMINAL WITH FUSE | 1312 2176 01 | 4 |
| TR | TRANSFORMER | 1312 2290 01 | 1 |
| RC | LINE RC FILTER | 1312 2001 00 | 1 |
| Y1 | SOLENOID VALVE LOAD CONTROL | - | - |
| S2 | PRESSURE SWITCH | 1312 3001 01 | 1 |
| TMP | TEMPERATURE SENSOR | 1312 2052 00 | 1 |
| KU | CONTROLLER UNIT | 1314 2171 14 | 1 |
| X1 | TERMINAL (STARTER BOX) | 1312 2227 00 | 14 |
| X2 | TERMINAL (CONTROLLER UNIT) | - | - |



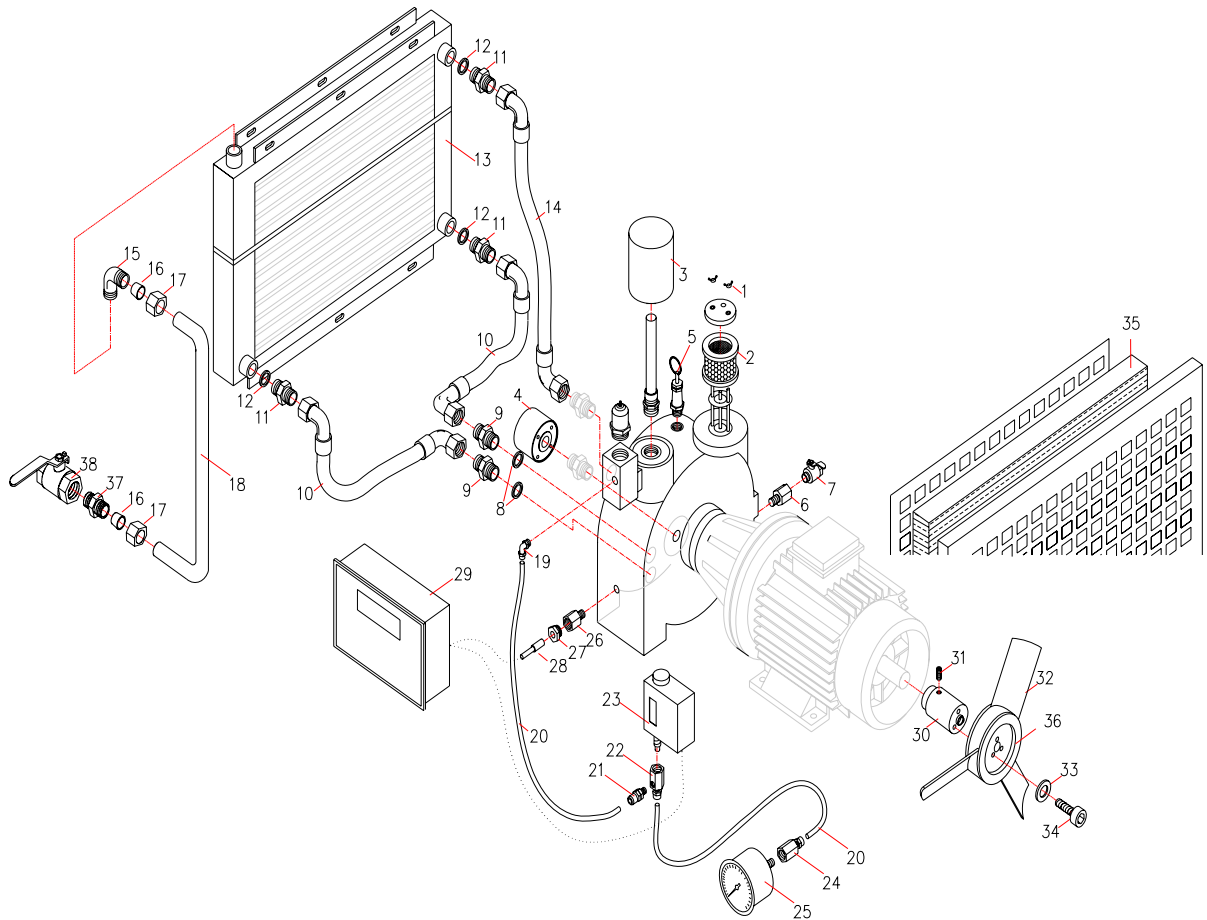
| REF. | PART NAME | COD. | QTY. |
|------|------------------|--------------|------|
| 1 | MOTOR | 0312 1007 03 | 1 |
| 2 | BOLT | 0313 1217 00 | 2 |
| 3 | WASHER | 2313 1390 00 | 2 |
| 4 | MOTOR FRAME | 1214 2344 00 | 1 |
| 5 | COUPLING | 2312 4132 00 | 1 |
| 6 | COUPLING ELEMENT | 2312 4133 00 | 1 |
| 7 | COUPLING HOUSING | 1314 2900 00 | 1 |
| 8 | COMPRESSOR UNIT | 1321 1006 00 | 1 |
| 9 | NUT | 0313 1305 00 | 4 |
| 10 | VIBRATION PAD | 1213 1790 00 | 4 |
| 11 | BOLT | 0313 1225 00 | 4 |
| 12 | WASHER | 0313 1357 00 | 8 |
| 13 | SOMUN | 0313 1306 00 | 4 |
| 14 | BOLT | 2313 1216 01 | 4 |
| 15 | BOLT | 0313 1210 00 | 4 |
| 16 | WASHER | 2313 1381 00 | 6 |
| 17 | SUPPORT | - | 2 |



| REF. | PART NAME | COD. | QTY. |
|------|-----------------------|--------------|------|
| 1 | NUT | 1313 1325 00 | 2 |
| 2 | INTAKE FILTER ELEMENT | 1311 1221 00 | 1 |
| 3 | SEPARATOR ELEMENT | 1311 1265 00 | 1 |
| 4 | OIL FILTER ELEMENT | 1311 1230 00 | 1 |
| 5 | SAFETY VALVE (7 Bar) | 0311 1300 00 | 1 |
| 6 | ADAPTOR | 1313 1105 00 | 1 |
| 7 | DRAIN VALVE | 0313 1552 00 | 1 |
| 8 | WASHER | 1313 1365 00 | 2 |
| 9 | NIPPLE | 1313 1070 00 | 2 |
| 10 | HOSE | 1313 0895 00 | 2 |
| 11 | NIPPLE | 0313 1078 00 | 3 |
| 12 | WASHER | 1313 1374 00 | 3 |
| 13 | COOLER | 1321 1109 00 | 1 |
| 14 | HOSE | 1313 0895 01 | 1 |
| 15 | ELBOW | 1313 1123 00 | 2 |
| 16 | THIMBLE | 2313 1476 00 | 2 |
| 17 | NUT | 2313 1300 00 | 2 |
| 18 | PIPE | 1313 1389 00 | 1 |
| 19 | ELBOW PNEU. | 1313 1121 00 | 1 |
| 20 | TUBE (PA) | 1313 1044 00 | 2 |
| 21 | CONNECTOR PNEU. | 1313 1125 00 | 1 |
| 22 | ADAPTOR | 1313 1451 00 | 1 |
| 23 | PRESSURE SWITCH | 1312 3001 01 | 1 |
| 24 | ADAPTOR | 1313 1452 00 | 1 |
| 25 | PRESSURE GAUGE | 1312 3010 00 | 1 |
| 26 | PROBE COVER | 1312 3016 02 | 1 |
| 27 | PROBE NUT | 1312 3018 00 | 1 |
| 28 | TEMPERATURE PROBE | 1312 3052 00 | 1 |
| 29 | CONTROLLER UNIT | 1314 2171 14 | 1 |
| 30 | ADAPTOR | 1313 1453 00 | 1 |
| 31 | BOLT | 2313 1260 00 | 1 |
| 32 | FAN BLADE | 1311 1138 03 | 3 |
| 33 | WASHER | 0313 1352 00 | 3 |
| 34 | BOLT | 2313 1236 00 | 3 |
| 35 | PANEL FILTER | 0311 1220 00 | 1 |
| 36 | FAN CENTER | 1311 1138 00 | 2 |

3.2 COMPRESSOR (WITHOUT RECEIVER)

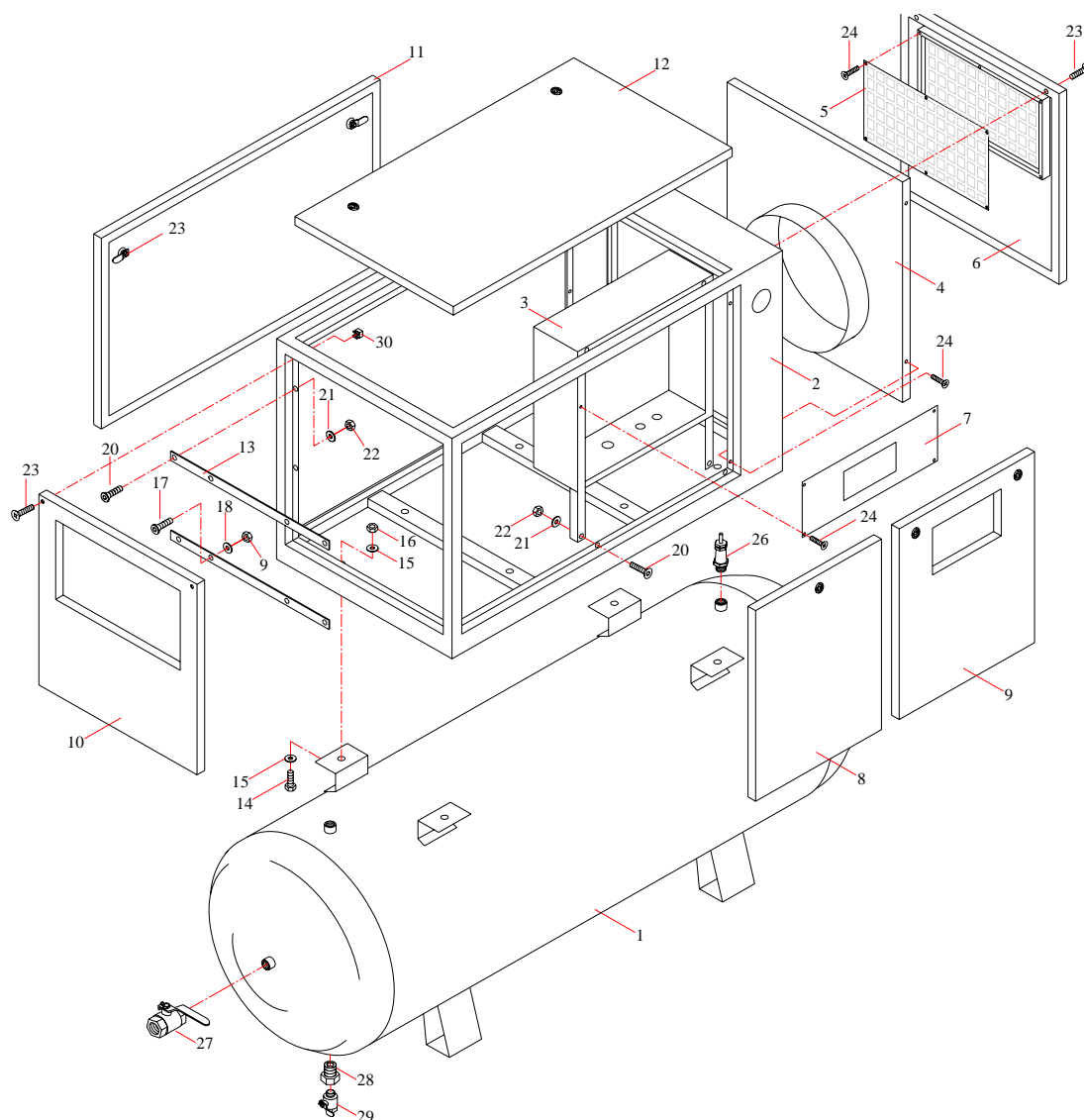
HGS 7D



| REF. | PART NAME | COD. | QTY. |
|------|-----------------------|--------------|------|
| 1 | NUT | 1313 1325 00 | 2 |
| 2 | INTAKE FILTER ELEMENT | 1311 1221 00 | 1 |
| 3 | SEPARATOR ELEMENT | 1311 1265 00 | 1 |
| 4 | OIL FILTER ELEMENT | 1311 1230 00 | 1 |
| 5 | SAFETY VALVE (7 Bar) | 0311 1300 00 | 1 |
| 6 | ADAPTOR | 1313 1105 00 | 1 |
| 7 | DRAIN VALVE | 0313 1552 00 | 1 |
| 8 | WASHER | 1313 1365 00 | 2 |
| 9 | NIPPLE | 1313 1070 00 | 2 |
| 10 | HOSE | 1313 0895 00 | 2 |
| 11 | NIPPLE | 0313 1078 00 | 3 |
| 12 | WASHER | 1313 1374 00 | 3 |
| 13 | COOLER | 1321 1109 00 | 1 |
| 14 | HOSE | 1313 0895 01 | 1 |
| 15 | ELBOW | 1313 1123 00 | 1 |
| 16 | THIMBLE | 2313 1476 00 | 2 |
| 17 | NUT | 2313 1300 00 | 2 |
| 18 | PIPE | 1313 1389 00 | 1 |
| 19 | ELBOW PNEU. | 1313 1121 00 | 1 |
| 20 | TUBE (PA) | 1313 1044 00 | 2 |
| 21 | CONNECTOR PNEU. | 1313 1125 00 | 1 |
| 22 | ADAPTOR | 1313 1451 00 | 1 |
| 23 | PRESSURE SWITCH | 1312 3001 01 | 1 |
| 24 | ADAPTOR | 1313 1452 00 | 1 |
| 25 | PRESSURE GAUGE | 1312 3010 00 | 1 |
| 26 | PROBE COVER | 1312 3016 02 | 1 |
| 27 | PROBE NUT | 1312 3018 00 | 1 |
| 28 | TEMPERATURE PROBE | 1312 3052 00 | 1 |
| 29 | CONTROLLER UNIT | 1314 2171 14 | 1 |
| 30 | ADAPTOR | 1313 1453 00 | 1 |
| 31 | BOLT | 2313 1260 00 | 1 |
| 32 | FAN BLADE | 1311 1138 03 | 3 |
| 33 | WASHER | 0313 1352 00 | 3 |
| 34 | BOLT | 2313 1236 00 | 3 |
| 35 | PANEL FILTER | 0311 1220 00 | 1 |
| 36 | FAN CENTER | 1311 1138 00 | 2 |
| 37 | NIPPLE | 0313 1072 00 | 1 |
| 38 | VALVE | 0313 1550 00 | 1 |

4.0 AIR RECEIVER & CANOPY

HGS 7D



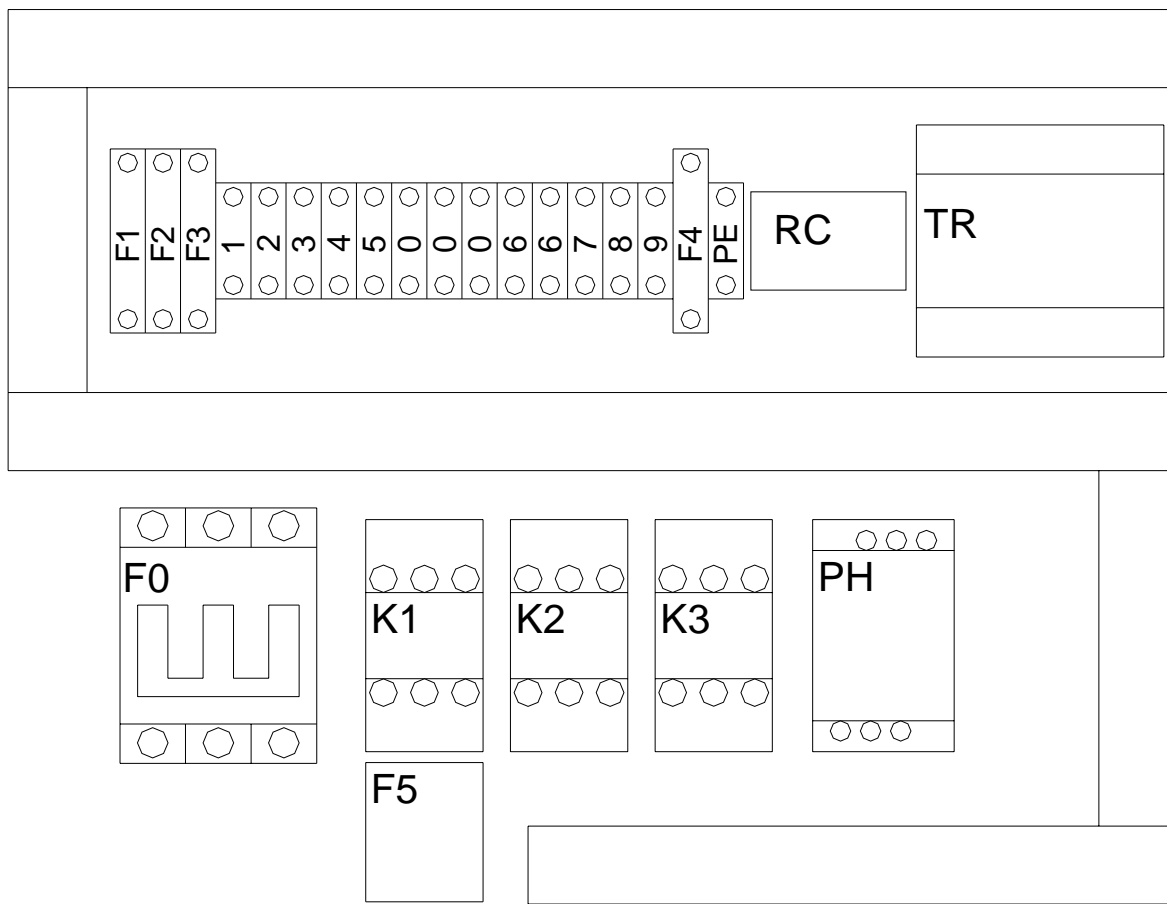
| REF. | PART NAME | COD. | QTY. |
|------|---------------------------|--------------|------|
| 1* | AIR RECEIVER | 0300 2419 00 | 1 |
| 2 | CANOPY | 1314 2000 01 | 1 |
| 3 | STARTER CABINET | 1214 2905 00 | 1 |
| 4 | FAN DAVLUMBAZI | 1214 2915 00 | 1 |
| 5 | P*RE FILTER COVER | 1214 2911 00 | 1 |
| 6 | FRONT COVER (P*RE FILTER) | 1214 2912 00 | 1 |
| 7 | PLC BOARD | 1214 2914 00 | 1 |
| 8 | FRONT LEFT COVER | 1214 2918 00 | 1 |
| 9 | COVER STARTER CABINET | 1214 2913 00 | 1 |
| 10 | COVER COOLER | 1214 2910 00 | 1 |
| 11 | BACK COVER | 1214 2908 00 | 1 |
| 12 | TOP COVER | 1214 2907 00 | 1 |
| 13 | COOLER SUPPORT | - | 2 |
| 14* | BOLT | 2313 1216 01 | 4 |
| 15* | WASHER | 2313 1381 00 | 8 |
| 16* | NUT | 0313 1305 00 | 4 |
| 17 | BOLT | 0313 1208 02 | 4 |
| 18 | WASHER | 0313 1353 00 | 4 |
| 19 | NUT | 0313 1304 00 | 4 |
| 20 | BOLT | 2313 1241 00 | 8 |
| 21 | WASHER | 0313 1352 00 | 8 |
| 22 | NUT | 0313 1303 00 | 8 |
| 23 | BOLT | 0313 1205 00 | 4 |
| 24 | SCREW | 1313 1246 00 | 14 |
| 25 | LOCK | 1314 2025 00 | 7 |
| 26* | SAFETY VALVE (7 Bar) | 0311 1300 00 | 1 |
| 27* | VALVE | 0313 1550 00 | 1 |
| 28* | ADAPTOR | 1313 1108 00 | 1 |
| 29* | DRAIN VALVE | 0313 1550 01 | 1 |
| 30* | SQUARE NUT | 1313 1304 00 | 4 |

(*) THEY ARE NOT USED IN MODEL WITHOUT RECEIVER

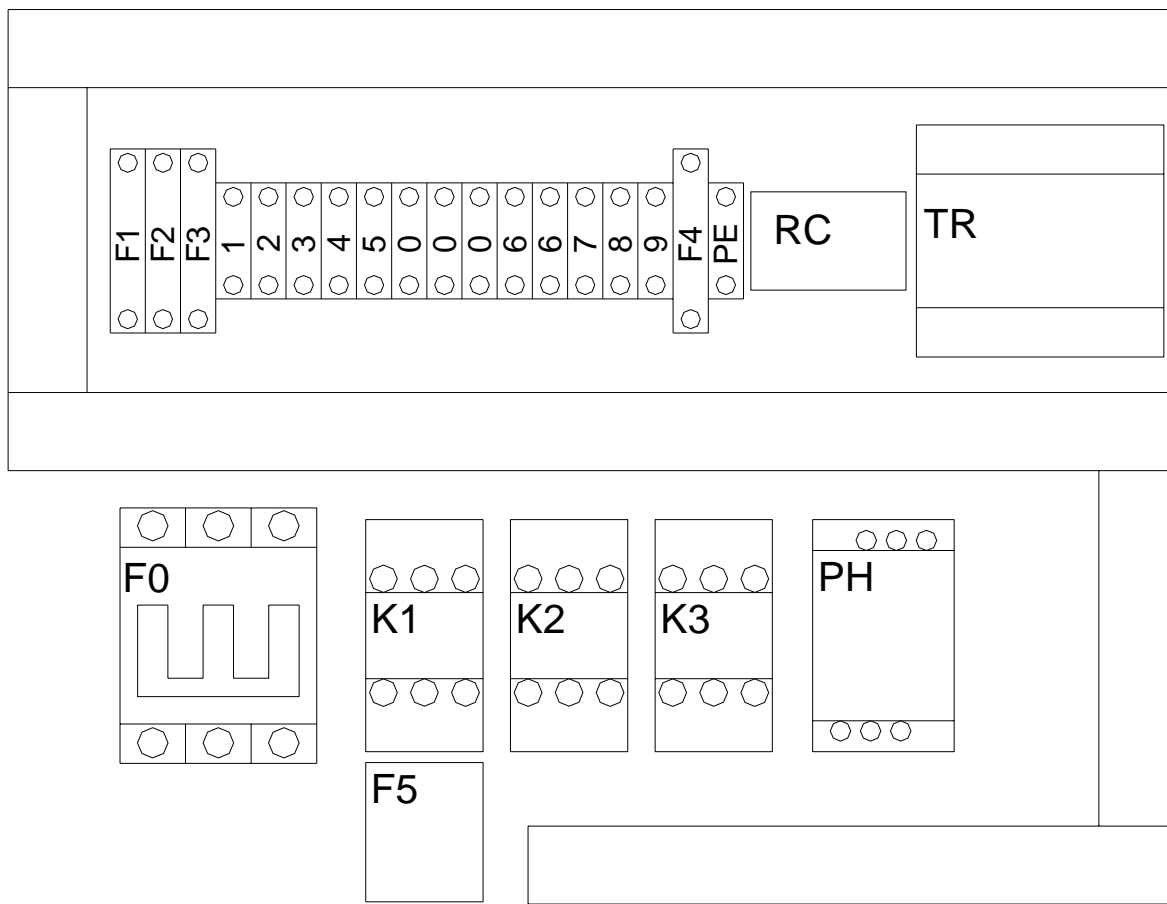
HGS 7 & 10

INDEX

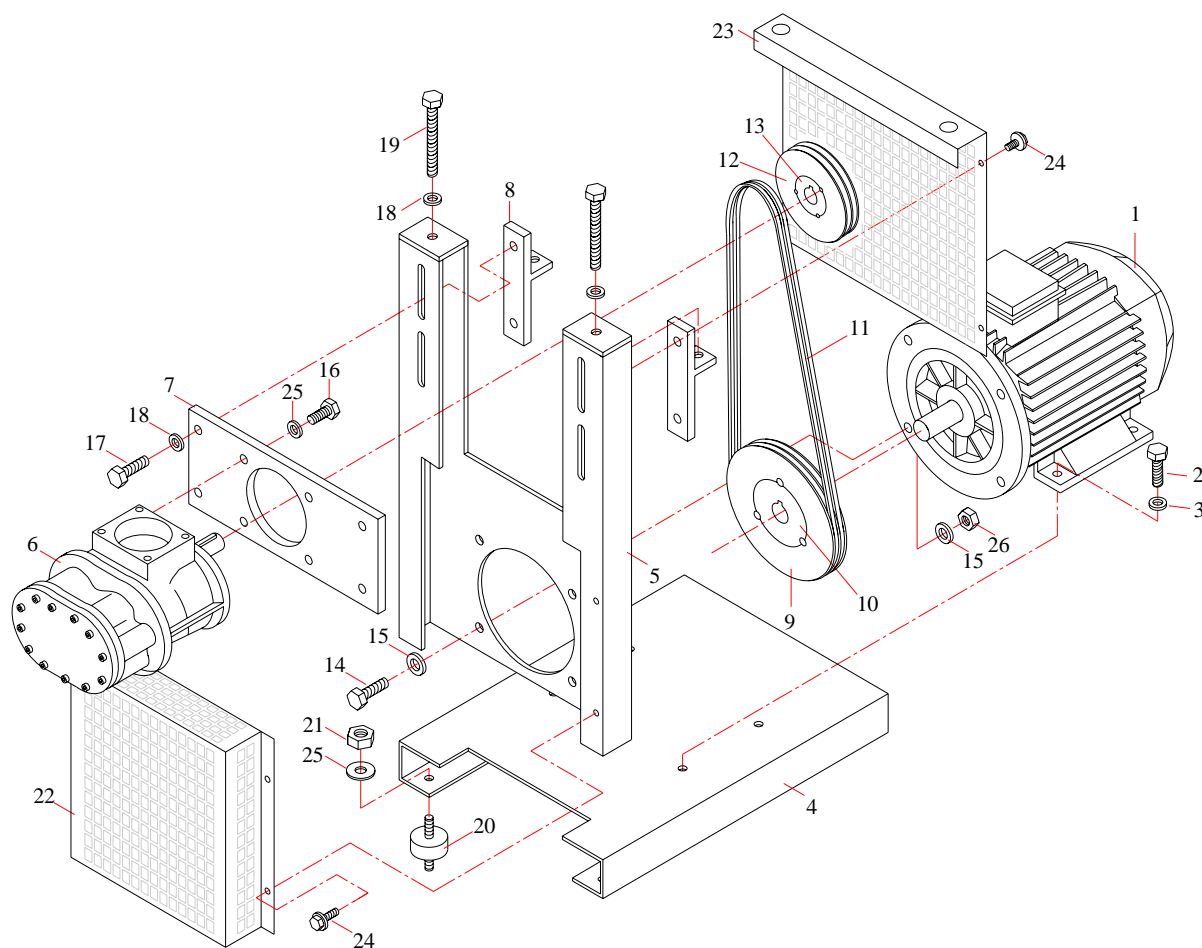
| | | |
|-----|--|----|
| 1.1 | ELECTRIC BOX - HGS 7 | 22 |
| 1.2 | ELECTRIC BOX - HGS 10 | 23 |
| 2.1 | DRIVING SYSTEM - HGS 7 | 24 |
| 2.2 | DRIVING SYSTEM - HGS 10 | 25 |
| 3.0 | INTAKE SYSTEM - HGS 7 / 10 | 26 |
| 4.0 | PRESSURE SYSTEM - HGS 7 / 10 | 27 |
| 5.1 | COOLING SYSTEM - HGS 7 | 28 |
| 5.2 | COOLING SYSTEM (WITHOUT RECEIVER) - HGS 7 | 29 |
| 5.3 | COOLING SYSTEM - HGS 10 | 30 |
| 5.4 | COOLING SYSTEM (WITHOUT RECEIVER) - HGS 10 | 31 |
| 6.1 | AIR RECEIVER & CANOPY - HGS 7 | 32 |
| 6.2 | AIR RECEIVER & CANOPY - HGS 10 | 33 |



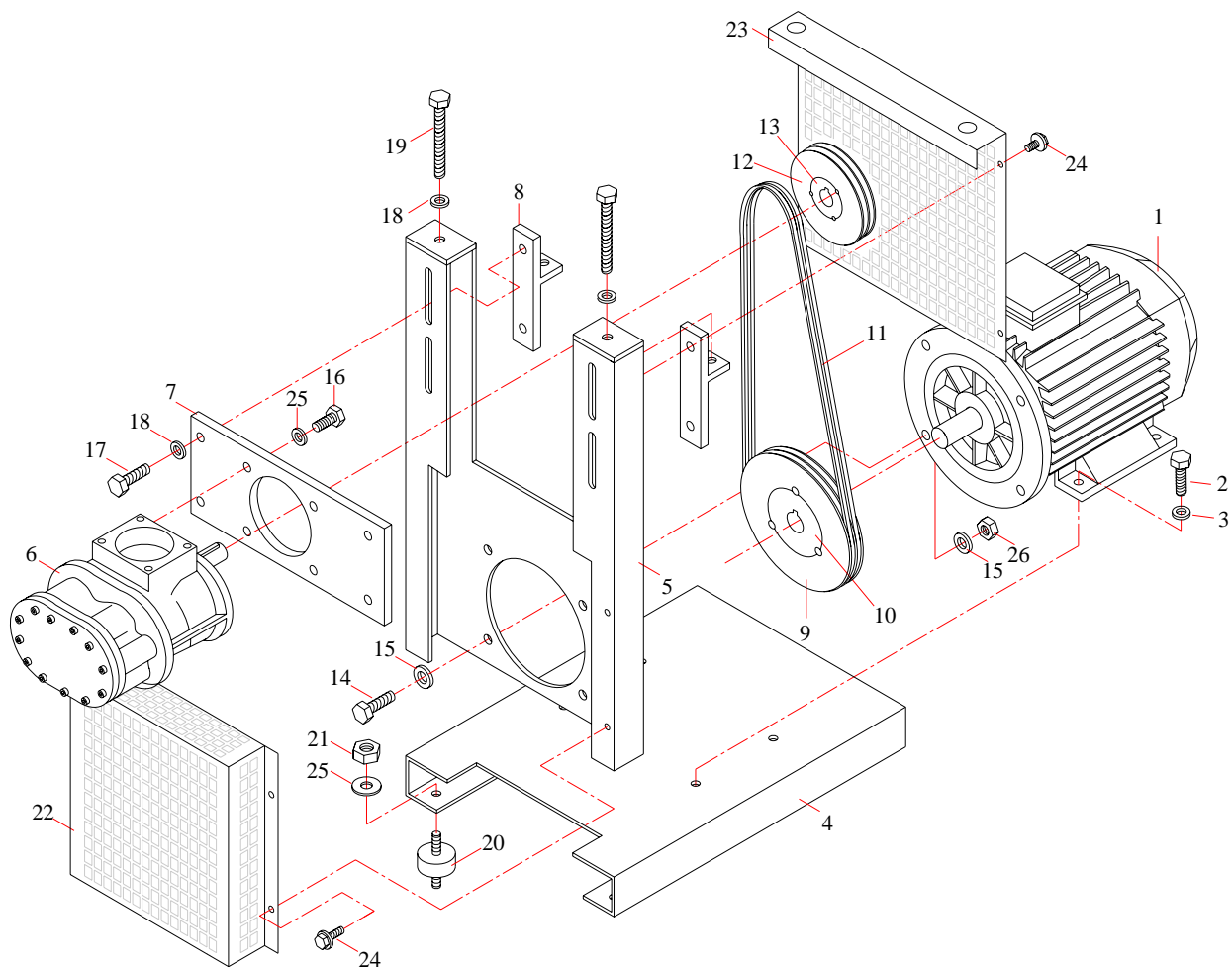
| REF. | PART NAME | COD. | QTY. |
|-----------------|-----------------------------|--------------|------|
| L1-L2-L3 | PHASES | - | - |
| PE | PROTECTIVE EARTH | 0315 1079 00 | 1 |
| S1 | MAIN SWITCH | - | - |
| F0 | MAIN INLET FUSE | 1600 1401 00 | 1 |
| F0 | MAIN LOAD SEPERATOR | 1312 2182 01 | 1 |
| K1 | CONTACTOR MAIN | 1600 1101 00 | 1 |
| K2 | CONTACTOR DELTA | 1600 1101 00 | 1 |
| K3 | CONTACTOR STAR | 1600 1101 00 | 1 |
| F5 | OVERLOAD RELAY MAIN MOTOR | 1600 1206 00 | 1 |
| M1 | MAIN MOTOR | 0312 1007 03 | 1 |
| PH | PHASES CONTROLLER UNIT | 1312 3051 00 | 1 |
| F1-F2 | FUSE TRANSFORMER INLET | 1312 2180 03 | 2 |
| F3 | FUSE TRANSFORMER 220 VAC | 1312 2180 03 | 1 |
| F4 | FUSE TRANSFORMER 12VAC | 1312 2180 04 | 1 |
| F1-F2- F3-F4 | TERMINAL WITH FUSE | 1312 2176 01 | 4 |
| TR | TRANSFORMER | 1312 2290 01 | 1 |
| RC | LINE RC FILTER | 1312 2001 00 | 1 |
| Y1 | SOLENOID VALVE LOAD CONTROL | - | - |
| S2 | PRESSURE SWITCH | 1312 3001 01 | 1 |
| TMP | TEMPERATURE SENSOR | 1312 2052 00 | 1 |
| KU | CONTROLLER UNIT | 1314 2171 14 | 1 |
| X1 | TERMINAL (STARTER BOX) | 1312 2227 00 | 14 |
| X2 | TERMINAL (CONTROLLER UNIT) | - | - |



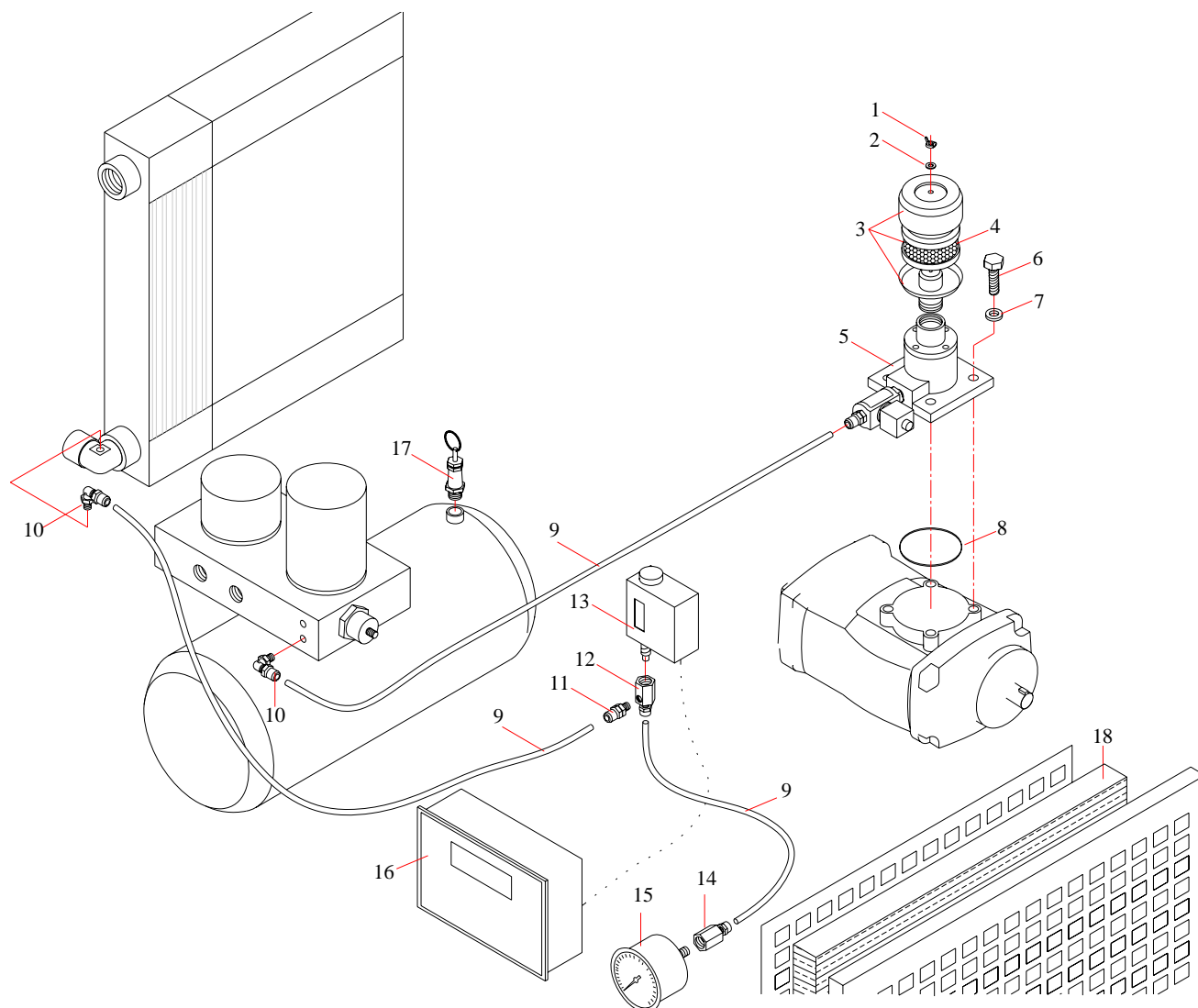
| REF. | PART NAME | COD. | QTY. |
|-----------------|-----------------------------|--------------|------|
| L1-L2-L3 | PHASES | - | - |
| PE | PROTECTIVE EARTH | 0315 1079 00 | 1 |
| S1 | MAIN SWITCH | - | - |
| F0 | MAIN INLET FUSE | 1600 1401 00 | 1 |
| F0 | MAIN LOAD SEPERATOR | 1312 2182 01 | 1 |
| K1 | CONTACTOR MAIN | 1600 1102 00 | 1 |
| K2 | CONTACTOR DELTA | 1600 1102 00 | 1 |
| K3 | CONTACTOR STAR | 1600 1101 00 | 1 |
| F5 | OVERLOAD RELAY MAIN MOTOR | 1600 1207 00 | 1 |
| M1 | MAIN MOTOR | 0312 1008 04 | 1 |
| PH | PHASES CONTROLLER UNIT | 1312 3051 00 | 1 |
| F1-F2 | FUSE TRANSFORMER INLET | 1312 2180 03 | 2 |
| F3 | FUSE TRANSFORMER 220 VAC | 1312 2180 03 | 1 |
| F4 | FUSE TRANSFORMER 12VAC | 1312 2180 04 | 1 |
| F1-F2- F3-F4 | TERMINAL WITH FUSE | 1312 2176 01 | 4 |
| TR | TRANSFORMER | 1312 2290 01 | 1 |
| RC | LINE RC FILTER | 1312 2001 00 | 1 |
| Y1 | SOLENOID VALVE LOAD CONTROL | 0312 3029 00 | - |
| S2 | PRESSURE SWITCH | 1312 3001 01 | 1 |
| TMP | TEMPERATURE SENSOR | 1312 2052 00 | 1 |
| KU | CONTROLLER UNIT | 1314 2171 14 | 1 |
| X1 | TERMINAL (STARTER BOX) | 1312 2227 00 | 14 |
| X2 | TERMINAL (CONTROLLER UNIT) | - | - |



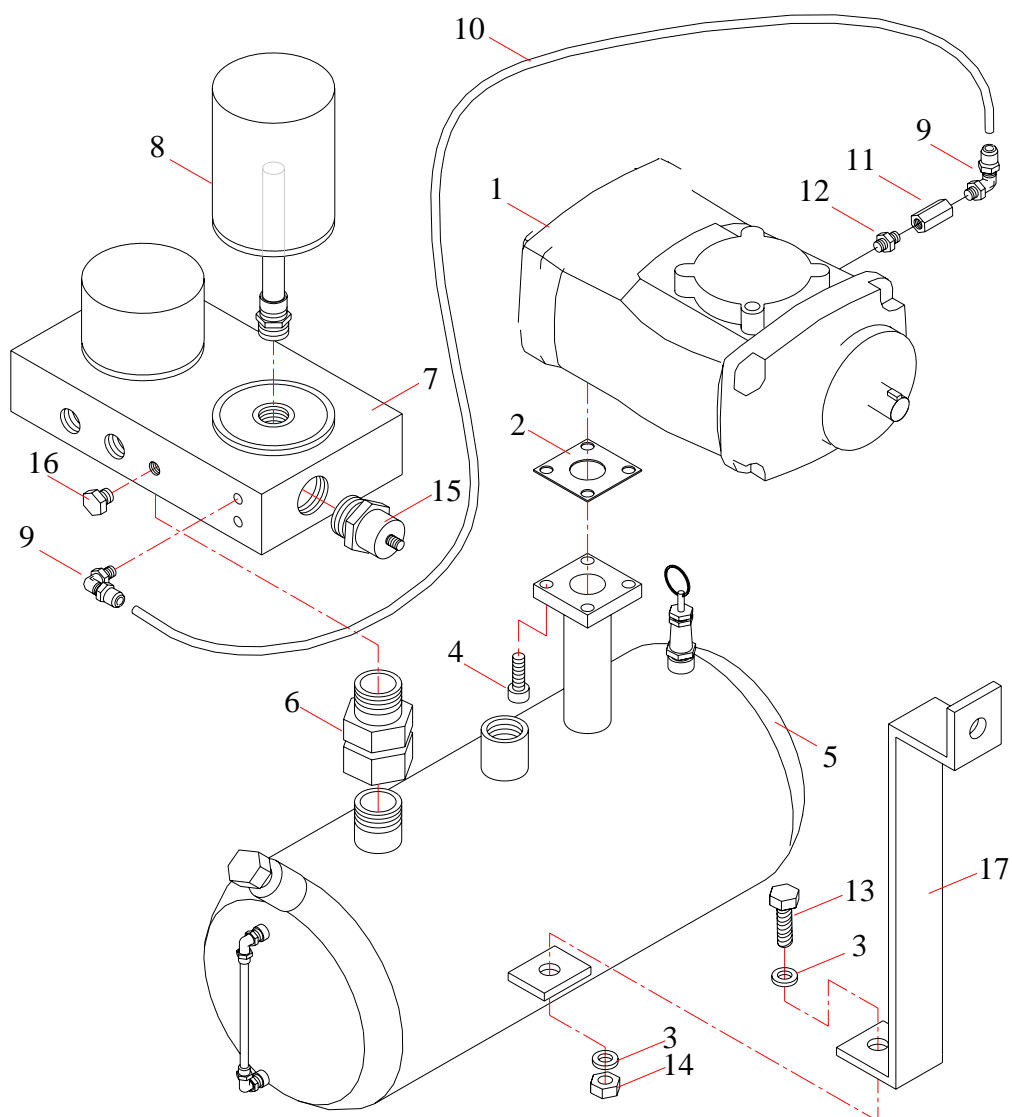
| REF. | PART NAME | COD. | QTY. |
|------|------------------------|--------------|------|
| 1 | MOTOR | 0312 1007 03 | 1 |
| 2 | BOLT | 0313 1217 00 | 4 |
| 3 | WASHER | 2313 1390 00 | 4 |
| 4 | FRAME (MOTOR) | 1214 2343 00 | 1 |
| 5 | FRAME (AIREND UNIT) | 1214 2282 00 | 1 |
| 6 | AIREND UNIT | 1321 1000 02 | 1 |
| 7 | ADAPTOR FLANGE | 1414 2205 02 | 1 |
| 8 | TENSION PART | 1214 2204 00 | 2 |
| 9 | PULLEY MOTOR (7 Bar) | 1312 4005 00 | 1 |
| 9 | PULLEY MOTOR (10 Bar) | 1312 4004 00 | 1 |
| 9 | PULLEY MOTOR (13 Bar) | 1312 3987 00 | 1 |
| 10 | BUSH MOTOR (7-10 Bar) | 1312 4077 00 | 1 |
| 10 | BUSH MOTOR (13 Bar) | 1312 4074 00 | 1 |
| 11 | BELT | 1312 4200 01 | 2 |
| 12 | PULLEY AIREND (7 Bar) | 1312 4069 00 | 1 |
| 12 | PULLEY AIREND (10 Bar) | 1312 4012 01 | 1 |
| 12 | PULLEY AIREND (13 Bar) | 1312 4014 01 | 1 |
| 13 | BUSH AIREND | 1312 4095 01 | 1 |
| 14 | BOLT | 0313 1224 00 | 4 |
| 15 | WASHER | 0313 1357 00 | 8 |
| 16 | BOLT | 0312 1246 00 | 4 |
| 17 | BOLT | 2313 1211 00 | 4 |
| 18 | WASHER | 0313 1353 00 | 6 |
| 19 | BOLT | 2313 1259 00 | 2 |
| 20 | VIBRATION PAD | 1213 1790 00 | 4 |
| 21 | NUT | 0313 1305 00 | 4 |
| 22 | GUARD (PULLEY MOTOR) | 1411 2005 00 | 1 |
| 23 | GUARD (PULLEY AIREND) | 1411 2005 01 | 1 |
| 24 | BOLT | 0313 1204 01 | 6 |
| 25 | WASHER | 2313 1381 00 | 8 |
| 26 | NUT | 0313 1306 00 | 4 |



| REF. | PART NAME | COD. | QTY. |
|------|-------------------------|--------------|------|
| 1 | MOTOR | 0312 1008 04 | 1 |
| 2 | BOLT | 0313 1217 00 | 4 |
| 3 | WASHER | 2313 1390 00 | 4 |
| 4 | FRAME (MOTOR) | 1214 2343 00 | 1 |
| 5 | FRAME (AIREND UNIT) | 1214 2282 00 | 1 |
| 6 | AIREND UNIT | 1321 1000 02 | 1 |
| 7 | ADAPTOR FLANGE | 1414 2205 02 | 1 |
| 8 | TENSION PART | 1214 2204 00 | 2 |
| 9 | PULLEY MOTOR (7-10 Bar) | 1312 4005 00 | 1 |
| 9 | PULLEY MOTOR (13 Bar) | 1312 4004 00 | 1 |
| 10 | BUSH MOTOR | 1312 4077 00 | 1 |
| 11 | BELT | 1312 4200 01 | 2 |
| 12 | PULLEY AIREND (7 Bar) | 1312 3999 10 | 1 |
| 12 | PULLEY AIREND (10 Bar) | 1312 4068 01 | 1 |
| 12 | PULLEY AIREND (13 Bar) | 1312 4068 00 | 1 |
| 13 | BUSH AIREND (7 Bar) | 1312 4095 01 | 1 |
| 13 | BUSH AIREND (10-13 Bar) | 1312 4095 00 | 1 |
| 14 | BOLT | 0313 1224 00 | 4 |
| 15 | WASHER | 0313 1357 00 | 8 |
| 16 | BOLT | 0312 1246 00 | 4 |
| 17 | BOLT | 2313 1211 00 | 4 |
| 18 | WASHER | 0313 1353 00 | 6 |
| 19 | BOLT | 2313 1259 00 | 2 |
| 20 | VIBRATION PAD | 1213 1790 00 | 4 |
| 21 | NUT | 0313 1305 00 | 4 |
| 22 | GUARD (PULLEY MOTOR) | 1411 2005 00 | 1 |
| 23 | GUARD (PULLEY AIREND) | 1411 2005 01 | 1 |
| 24 | BOLT | 0313 1204 01 | 6 |
| 25 | WASHER | 2313 1381 00 | 8 |
| 26 | NUT | 0313 1306 00 | 4 |



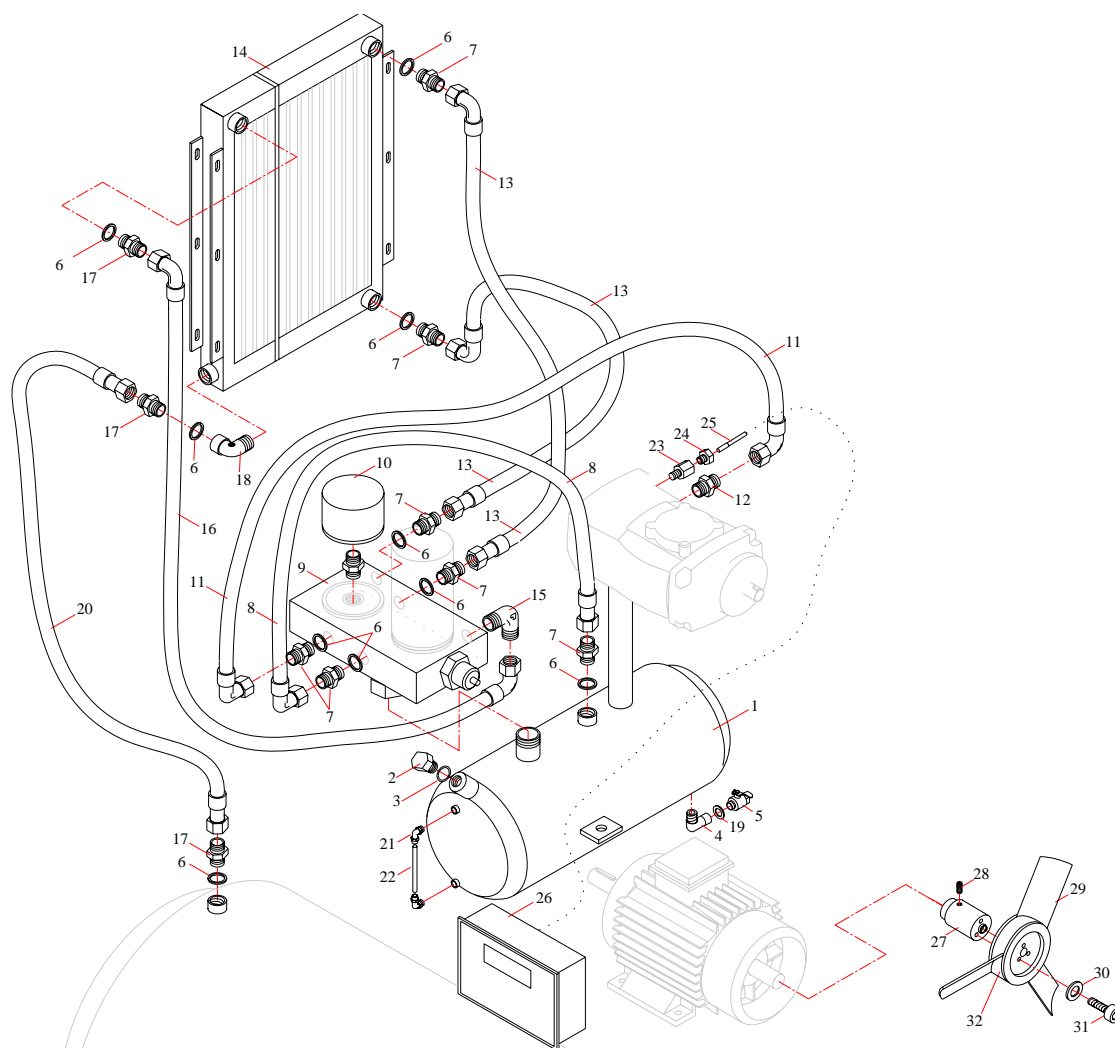
| REF. | PART NAME | COD. | QTY. |
|------|-----------------------|--------------|------|
| 1 | NUT | 1313 1325 00 | 1 |
| 2 | WASHER | 0313 1352 00 | 1 |
| 3 | FILTER (COMPLETE) | 2311 1222 00 | 1 |
| 4 | FILTER ELEMENT | 2311 1221 00 | 1 |
| 5 | INTAKE VALVE | 1321 1010 00 | 1 |
| 6 | NUT | 0313 1208 00 | 4 |
| 7 | WASHER | 0313 1353 00 | 4 |
| 8 | O'RING | 1313 1670 00 | 1 |
| 9 | TUBE (PA) | 1313 1044 00 | 3 |
| 10 | ELBOW PNEU. | 1313 1121 00 | 2 |
| 11 | ADAPTOR | 1313 1125 00 | 1 |
| 12 | ADAPTOR | 1313 1451 00 | 1 |
| 13 | PRESSURE SWITCH | 1312 3001 01 | 1 |
| 14 | ADAPTOR | 1313 1452 00 | 1 |
| 15 | PRESSURE GAUGE | 1312 3010 00 | 1 |
| 16 | CONTROLLER UNIT | 1314 2171 14 | 1 |
| 17 | SAFETY VALVE (7 Bar) | 0311 1300 00 | 1 |
| 17 | SAFETY VALVE (10 Bar) | 0311 1303 00 | 1 |
| 17 | SAFETY VALVE (13 Bar) | 0311 1304 00 | 1 |
| 18 | PANEL FILTER | 0311 1220 00 | 1 |



| REF. | PART NAME | COD. | QTY. |
|------|---------------------|--------------|------|
| 1 | AIREND UNIT | 1321 1000 02 | 1 |
| 2 | GASKET | 1313 1598 00 | 1 |
| 3 | WASHER | 0313 1353 00 | 2 |
| 4 | BOLT | 0313 1210 00 | 4 |
| 5 | OIL TANK | 1314 2194 00 | 1 |
| 6 | ADAPTOR | 2313 1128 01 | 1 |
| 7 | MULTIBLOCK | 1321 1124 00 | 1 |
| 8 | SEPARATOR ELEMENT | 1311 1265 00 | 1 |
| 9 | ELBOW | 1313 1121 00 | 2 |
| 10 | TUBA (PA) | 1313 1044 00 | 1 |
| 11 | CHECK VALVE | 2311 1437 00 | 1 |
| 12 | NIPPLE | 2313 1100 00 | 1 |
| 13 | BOLT | 2313 1211 00 | 1 |
| 14 | NUT | 0313 1304 00 | 1 |
| 15 | MIN. PRESSURE VALVE | - | 1 |
| 16 | PLUG | 1214 2297 02 | 1 |
| 17 | SUPPORT | 1314 1212 00 | 1 |

5.1 COOLING SYSTEM

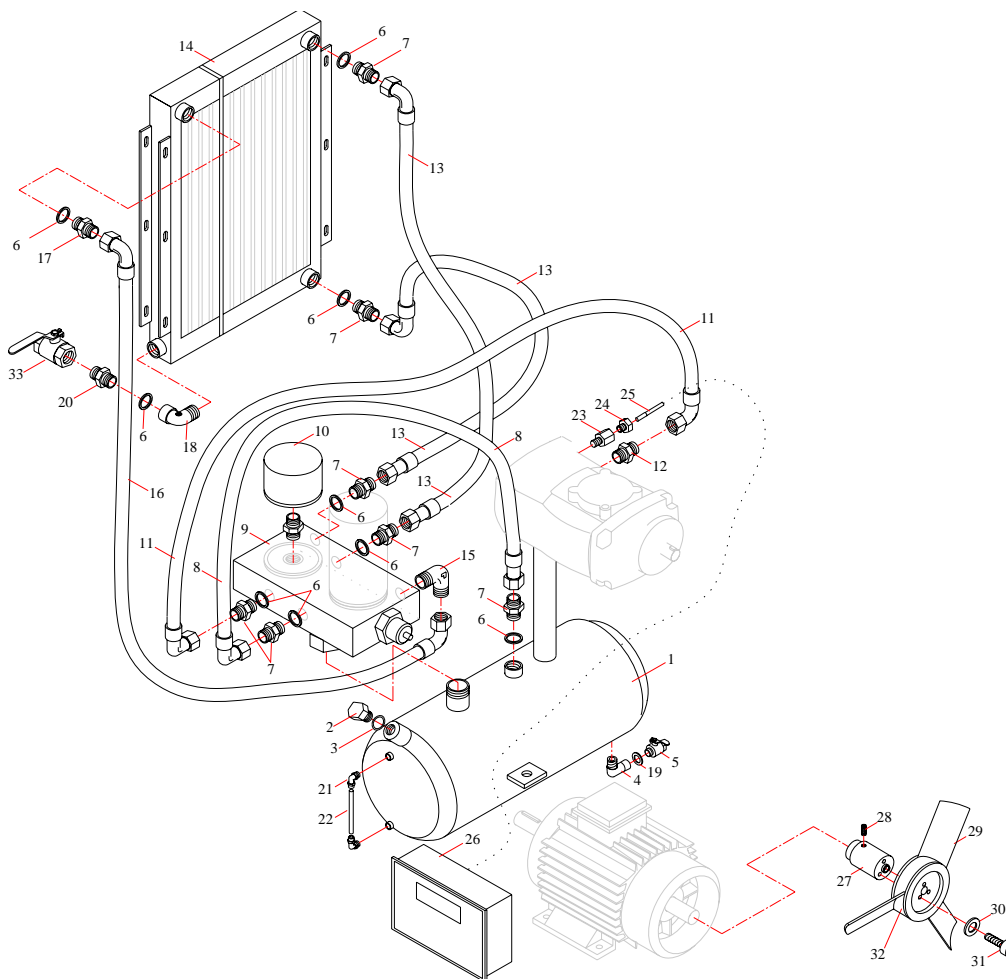
HGS 7



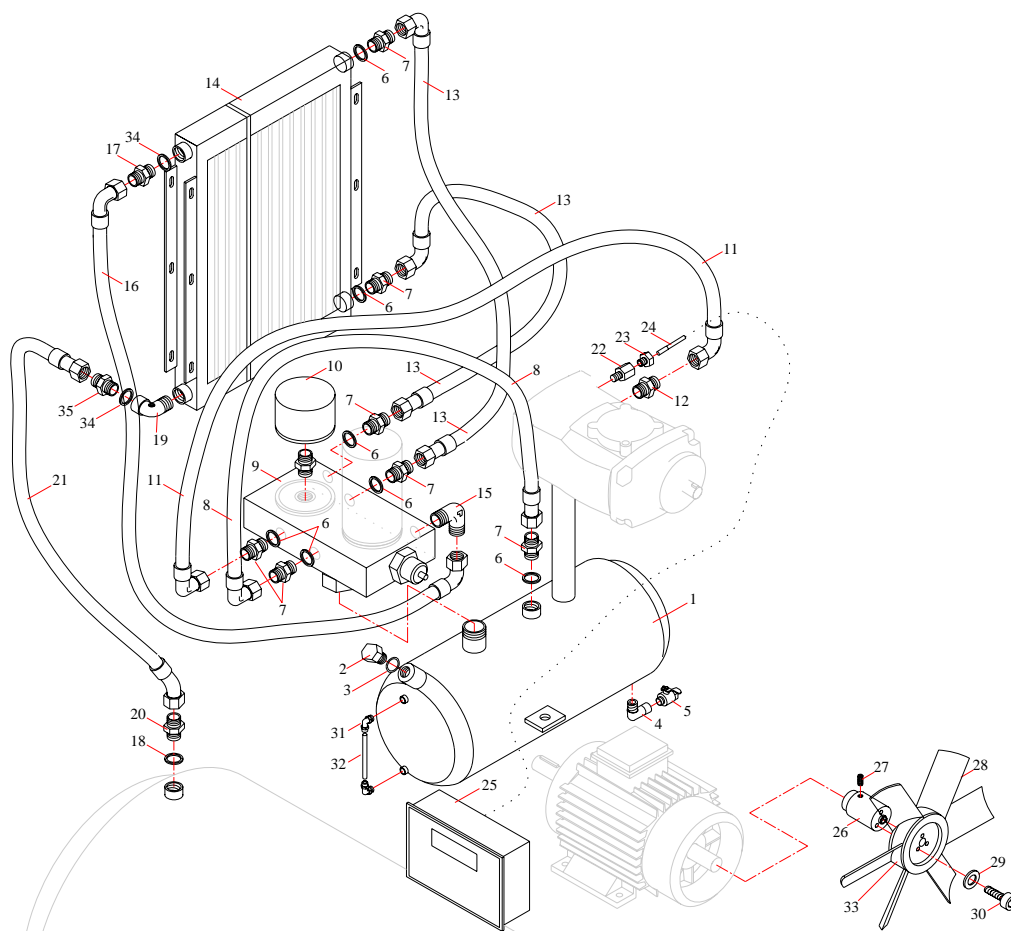
| REF. | PART NAME | COD. | QTY. |
|------|--------------------|--------------|------|
| 1 | OIL TANK | 1314 2194 00 | 1 |
| 2 | PLUG | 1214 2297 01 | 1 |
| 3 | O'RING | 1313 1677 00 | 1 |
| 4 | ELBOW | 0313 1113 00 | 1 |
| 5 | DRAIN VALVE | 0313 1552 00 | 1 |
| 6 | WASHER | 1313 1374 00 | 10 |
| 7 | NIPPLE | 0313 1077 03 | 7 |
| 8 | HOSE | 1313 0900 00 | 1 |
| 9 | MULTIBLOCK | 1321 1124 00 | 1 |
| 10 | OIL FILTER ELEMENT | 1311 1230 00 | 1 |
| 11 | HOSE | 1313 0900 02 | 1 |
| 12 | NIPPLE | 0313 1077 04 | 1 |
| 13 | HOSE | 1313 0900 01 | 2 |
| 14 | COOLER | 1321 1109 00 | 1 |
| 15 | ELBOW | 1313 1123 00 | 1 |
| 16 | HOSE | 1313 0900 03 | 1 |
| 17 | NIPPLE | 0313 1072 00 | 3 |
| 18 | ELBOW | 0313 1138 00 | 1 |
| 19 | NIPPLE | 1313 1373 00 | 1 |
| 20 | HOSE | 1313 0900 06 | 1 |
| 21 | ELBOW | 0313 1115 00 | 2 |
| 22 | TUBE (PA) | 1313 1045 00 | 1 |
| 23 | PROBE COVER | 1312 3016 04 | 1 |
| 24 | PROBE NUT | 1312 3018 00 | 1 |
| 25 | TEMPERATURE PROBE | 1312 3052 00 | 1 |
| 26 | CONTROLLER UNIT | 1314 2171 14 | 1 |
| 27 | ADAPTOR | 1313 1453 00 | 1 |
| 28 | BOLT | 2313 1260 00 | 1 |
| 29 | FAN BLADE | 1311 1138 03 | 3 |
| 30 | WASHER | 0313 1352 00 | 3 |
| 31 | BOLT | 2313 1236 00 | 3 |
| 32 | FAN CENTER | 1311 1138 00 | 2 |

5.2 COOLING SYSTEM (WITHOUT RECEIVER)

HGS 7



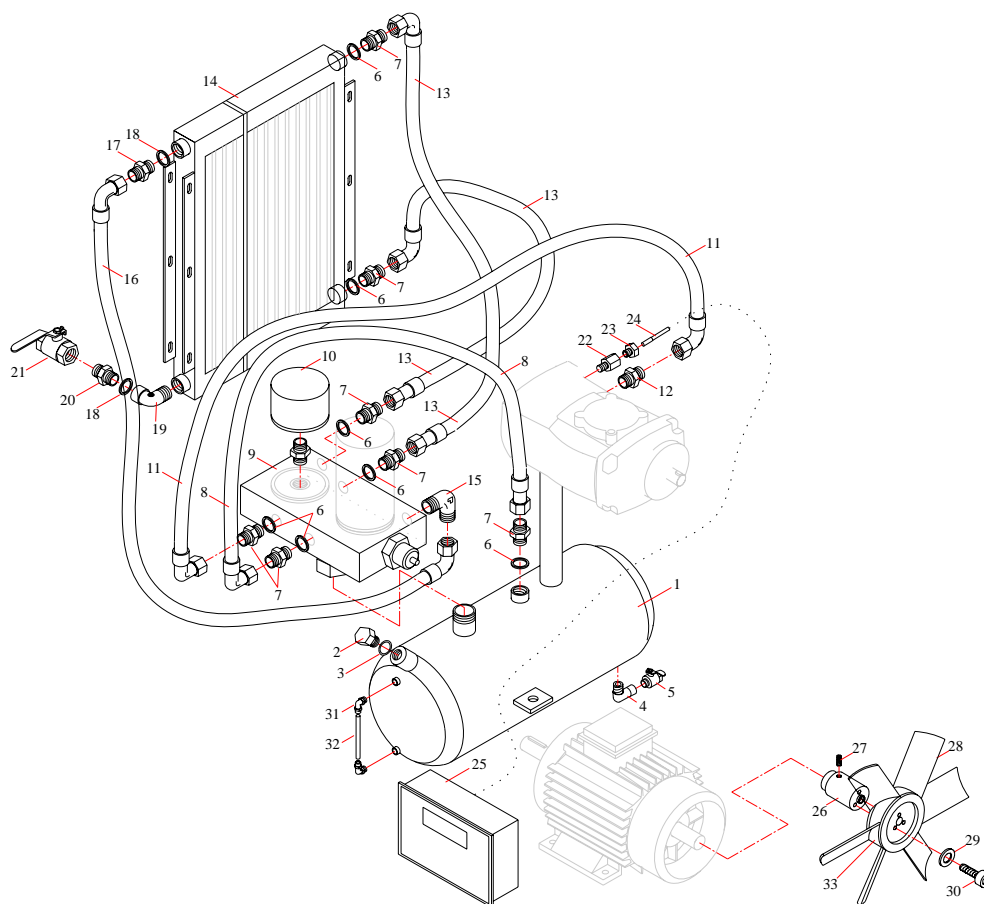
| REF. | PART NAME | COD. | QTY. |
|------|--------------------|--------------|------|
| 1 | OIL TANK | 1314 2194 00 | 1 |
| 2 | PLUG | 1214 2297 01 | 1 |
| 3 | O'RING | 1313 1677 00 | 1 |
| 4 | ELBOW | 0313 1113 00 | 1 |
| 5 | DRAIN VALVE | 0313 1552 00 | 1 |
| 6 | WASHER | 1313 1374 00 | 10 |
| 7 | NIPPLE | 0313 1077 03 | 7 |
| 8 | HOSE | 1313 0900 00 | 1 |
| 9 | MULTIBLOCK | 1321 1124 00 | 1 |
| 10 | OIL FILTER ELEMENT | 1311 1230 00 | 1 |
| 11 | HOSE | 1313 0900 02 | 1 |
| 12 | NIPPLE | 0313 1077 04 | 1 |
| 13 | HOSE | 1313 0900 01 | 2 |
| 14 | COOLER | 1321 1109 00 | 1 |
| 15 | ELBOW | 1313 1123 00 | 1 |
| 16 | HOSE | 1313 0900 03 | 1 |
| 17 | NIPPLE | 0313 1072 00 | 1 |
| 18 | ELBOW | 0313 1138 00 | 1 |
| 19 | WASHER | 1313 1373 00 | 1 |
| 20 | NIPPLE | 1313 1091 00 | 1 |
| 21 | ELBOW PNEU. | 0313 1115 00 | 2 |
| 22 | TUBE (PA) | 1313 1045 00 | 1 |
| 23 | PROBE COVER | 1312 3016 04 | 1 |
| 24 | PROBE NUT | 1312 3018 00 | 1 |
| 25 | TEMPERATURE PROBE | 1312 3052 00 | 1 |
| 26 | CONTROLLER UNIT | 1314 2171 14 | 1 |
| 27 | ADAPTOR | 1313 1453 00 | 1 |
| 28 | BOLT | 2313 1260 00 | 1 |
| 29 | FAN BLADE | 1311 1138 03 | 3 |
| 30 | WASHER | 0313 1352 00 | 3 |
| 31 | BOLT | 2313 1236 00 | 3 |
| 32 | FAN CENTER | 1311 1138 00 | 2 |
| 33 | VALVE | 0313 1550 00 | 1 |



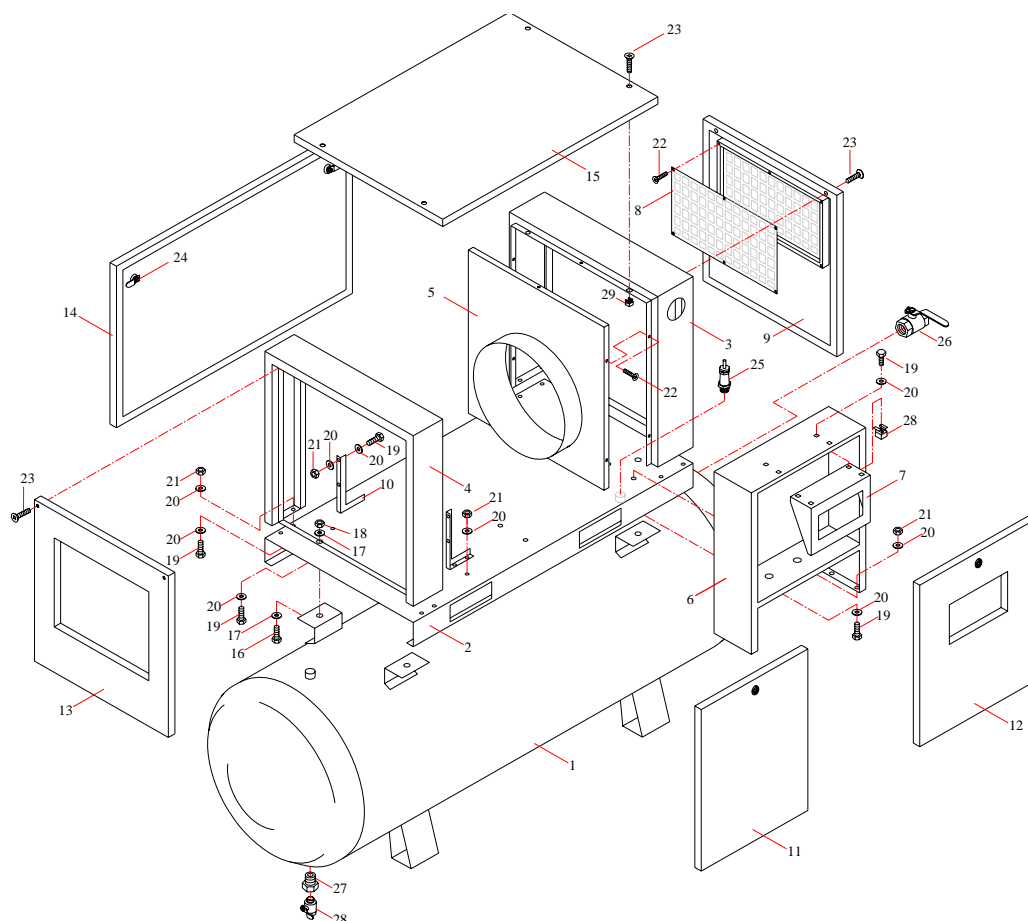
| REF. | PART NAME | COD. | QTY. |
|------|--------------------|--------------|------|
| 1 | OIL TANK | 1314 2194 00 | 1 |
| 2 | PLUG | 1214 2297 01 | 1 |
| 3 | O'RING | 1313 1677 00 | 1 |
| 4 | ELBOW | 0313 1113 00 | 1 |
| 5 | DRAIN VALVE | 0313 1552 00 | 1 |
| 6 | WASHER | 1313 1374 00 | 7 |
| 7 | NIPPLE | 0313 1077 03 | 7 |
| 8 | HOSE | 1313 0900 00 | 1 |
| 9 | MULTIBLOCK | 1321 1124 00 | 1 |
| 10 | OIL FILTER ELEMENT | 1311 1230 00 | 1 |
| 11 | HOSE | 1313 0900 02 | 1 |
| 12 | NIPPLE | 0313 1077 04 | 1 |
| 13 | HOSE | 1313 0900 01 | 2 |
| 14 | COOLER (EMMEGI) | 1321 1100 00 | 1 |
| 14 | COOLER (OESSE) | 1321 1100 02 | 1 |
| 15 | ELBOW | 1313 1123 00 | 1 |
| 16 | HOSE | 1313 0900 03 | 1 |
| 17 | NIPPLE (EMMEGI) | 1313 1072 00 | 1 |
| 17 | NIPPLE (OESSE) | 0313 1072 00 | 1 |
| 18 | WASHER | 1313 1375 00 | 1 |
| 19 | ELBOW (EMMEGI) | 1313 1140 01 | 1 |
| 19 | ELBOW (OESSE) | 0313 1138 00 | 1 |
| 20 | NIPPLE | 1313 1073 00 | 1 |
| 21 | HOSE | 1313 0900 04 | 1 |
| 22 | PROBE COVER | 1312 3016 04 | 1 |
| 23 | PROBE NUT | 1312 3018 00 | 1 |
| 24 | TEMPERATURE PROBE | 1312 3052 00 | 1 |
| 25 | CONTROLLER UNIT | 1314 2171 14 | 1 |
| 26 | ADAPTOR | 1313 1453 00 | 1 |
| 27 | BOLT | 2313 1260 00 | 1 |
| 28 | FAN BLADE | 1311 1138 03 | 6 |
| 29 | WASHER | 0313 1352 00 | 3 |
| 30 | BOLT | 2313 1236 00 | 3 |
| 31 | ELBOW PNEU. | 0313 1115 00 | 2 |
| 32 | TUBE (PA) | 1313 1045 00 | 1 |
| 33 | FAN CENTER | 1311 1138 00 | 2 |
| 34 | WASHER (EMMEGI) | 1313 1375 00 | 2 |
| 34 | WASHER (OESSE) | 1313 1374 00 | 2 |
| 35 | NIPPLE (EMMEGI) | 1313 1073 00 | 1 |
| 35 | NIPPLE (OESSE) | 0313 1090 00 | 1 |

5.4 COOLING SYSTEM (WITHOUT RECEIVER)

HGS 10

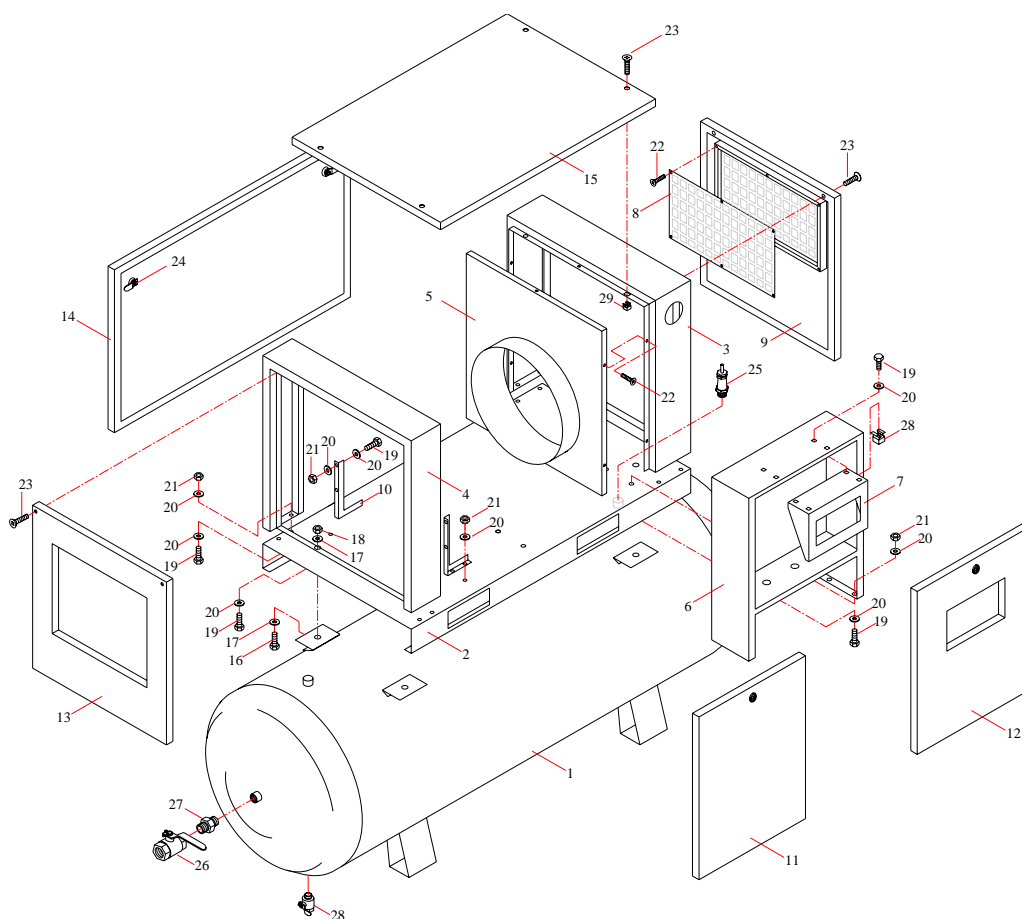


| REF. | PART NAME | COD. | QTY. |
|------|--------------------|--------------|------|
| 1 | OIL TANK | 1314 2194 00 | 1 |
| 2 | PLUG | 1214 2297 01 | 1 |
| 3 | O'RING | 1313 1677 00 | 1 |
| 4 | ELBOW | 0313 1113 00 | 1 |
| 5 | DRAIN VALVE | 0313 1552 00 | 1 |
| 6 | WASHER | 1313 1374 00 | 7 |
| 7 | NIPPLE | 0313 1077 03 | 7 |
| 8 | HOSE | 1313 0900 00 | 1 |
| 9 | MULTIBLOCK | 1321 1124 00 | 1 |
| 10 | OIL FILTER ELEMENT | 1311 1230 00 | 1 |
| 11 | HOSE | 1313 0900 02 | 1 |
| 12 | NIPPLE | 0313 1077 04 | 1 |
| 13 | HOSE | 1313 0900 01 | 2 |
| 14 | COOLER (EMMEGI) | 1321 1100 02 | 1 |
| 14 | COOLER (OESSE) | 1321 1100 00 | 1 |
| 15 | ELBOW | 1313 1123 00 | 1 |
| 16 | HOSE | 1313 0900 03 | 1 |
| 17 | NIPPLE (EMMEGI) | 1313 1072 00 | 1 |
| 17 | NIPPLE (OESSE) | 0313 1072 00 | 1 |
| 18 | WASHER (EMMEG) | 1313 1375 00 | 2 |
| 18 | WASHER (OESSE) | 1313 1374 00 | 2 |
| 19 | ELBOW (EMMEGI) | 1313 1140 01 | 1 |
| 19 | ELBOW (OESSE) | 0313 1138 00 | 1 |
| 20 | NIPPLE (EMMEGI) | 1313 1078 00 | 1 |
| 20 | NIPPLE (OESSE) | 0313 1079 00 | 1 |
| 21 | VALVE | 0313 1551 00 | 1 |
| 22 | PROBE COVER | 1312 3016 04 | 1 |
| 23 | PROBE NUT | 1312 3018 00 | 1 |
| 24 | TEMPERATURE PROBE | 1312 3052 00 | 1 |
| 25 | CONTROLLER UNIT | 1314 2171 14 | 1 |
| 26 | ADAPTOR | 1313 1453 00 | 1 |
| 27 | BOLT | 2313 1260 00 | 1 |
| 28 | FAN BLADE | 1311 1138 03 | 6 |
| 29 | WASHER | 0313 1352 00 | 3 |
| 30 | BOLT | 2313 1236 00 | 3 |
| 31 | ELBOW PNEU. | 0313 1115 00 | 2 |
| 32 | TUBE (PA) | 1313 1045 00 | 1 |
| 33 | FAN CENTER | 1311 1138 00 | 2 |



| REF. | PART NAME | COD. | QTY. |
|------|---------------------------|--------------|------|
| 1* | AIR RECEIVER | 0200 2418 00 | 1 |
| 2 | BOTTOM FRAME | 1314 2197 00 | 1 |
| 3 | RIGHT POLE GROUP | 1314 1997 01 | 1 |
| 4 | LEFT POLE GROUP | 1314 1997 02 | 1 |
| 5 | FAN COWL | 1214 2915 01 | 1 |
| 6 | STARTER CABINET | 1312 2413 02 | 1 |
| 7 | PLC BOARD | 1214 2897 03 | 1 |
| 8 | P*RE FILTER COVER | 1314 1997 00 | 1 |
| 9 | FRONT COVER (P*RE FILTER) | 1314 1997 03 | 1 |
| 10 | COOLER SUPPORT | - | 2 |
| 11 | FRONT LEFT COVER | 1214 2898 02 | 1 |
| 12 | COVER STARTER CABINET | 1312 2413 01 | 1 |
| 13 | COVER COOLER | 1314 2077 00 | 1 |
| 14 | BACK COVER | 1214 2899 00 | 1 |
| 15 | TOP COVER | 1214 2899 01 | 1 |
| 16* | BOLT | 2313 1216 01 | 4 |
| 17* | WASHER | 2313 1381 00 | 8 |
| 18* | NUT | 0313 1305 00 | 4 |
| 19 | BOLT | 2313 1202 00 | 24 |
| 20 | WASHER | 0313 1352 00 | 44 |
| 21 | NUT | 0313 1303 00 | 20 |
| 22 | SCREW | 1313 1246 00 | 10 |
| 23 | BOLT | 0313 1205 00 | 8 |
| 24 | LOCK | 1314 2025 00 | 4 |
| 25* | SAFETY VALVE (7 Bar) | 0311 1300 00 | 1 |
| 25* | SAFETY VALVE (10 Bar) | 0311 1303 00 | 1 |
| 25* | SAFETY VALVE (13 Bar) | 0311 1304 00 | 1 |
| 26* | VALVE | 0313 1550 00 | 1 |
| 27* | ADAPTOR | 1313 1108 00 | 1 |
| 28* | DRAIN VALVE | 0313 1550 01 | 1 |
| 29 | SQUARE NUT | 1313 1304 00 | 12 |

(*) THEY ARE NOT USED IN MODEL WITHOUT RECEIVER



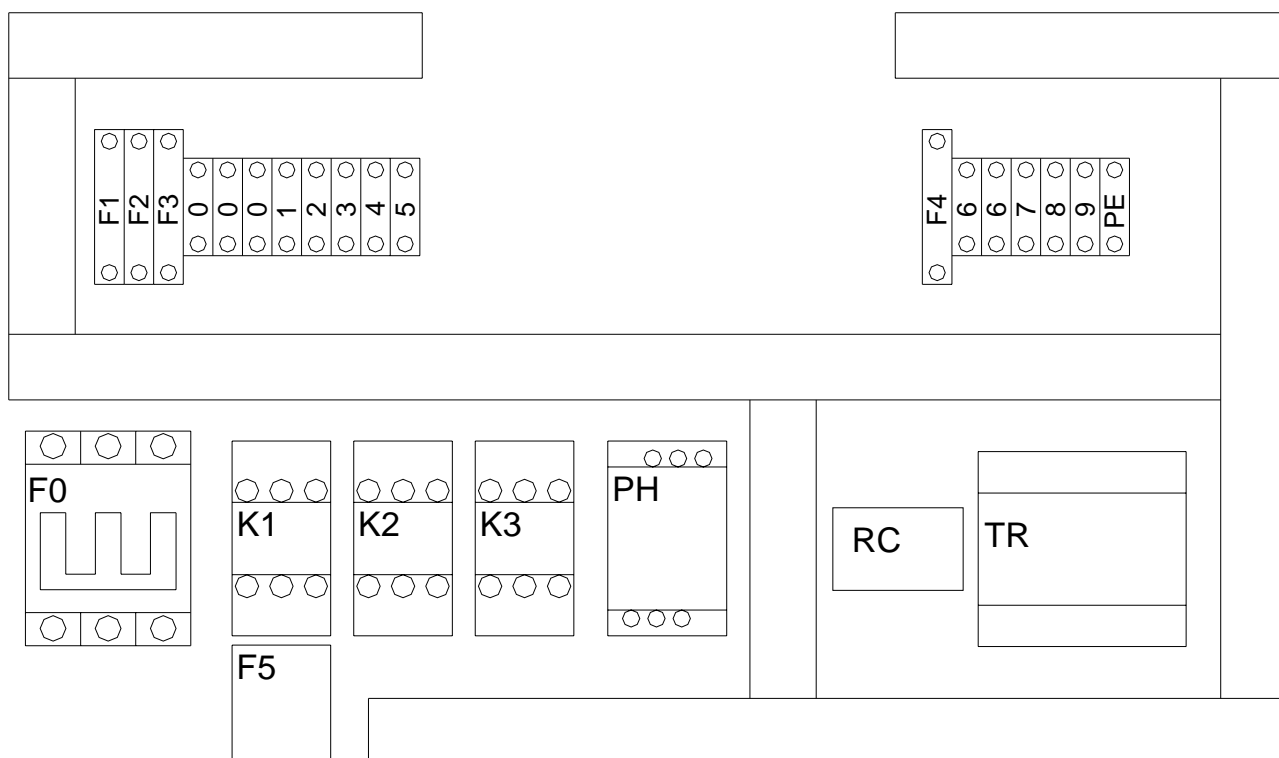
| REF. | PART NAME | COD. | QTY. |
|------|---------------------------|--------------|------|
| 1* | AIR RECEIVER | 0300 2416 00 | 1 |
| 2 | BOTTOM FRAME | 1314 2197 00 | 1 |
| 3 | RIGHT POLE GROUP | 1314 1997 01 | 1 |
| 4 | LEFT POLE GROUP | 1314 1997 02 | 1 |
| 5 | FAN COWL | 1214 2915 01 | 1 |
| 6 | STARTER CABINET | 1312 2413 02 | 1 |
| 7 | PLC BOARD | 1214 2897 03 | 1 |
| 8 | P*RE FILTER COVER | 1314 1997 00 | 1 |
| 9 | FRONT COVER (P*RE FILTER) | 1314 1997 03 | 1 |
| 10 | COOLER SUPPORT | - | 2 |
| 11 | FRONT LEFT COVER | 1214 2898 02 | 1 |
| 12 | COVER STARTER CABINET | 1312 2413 01 | 1 |
| 13 | COVER COOLER | 1314 2077 10 | 1 |
| 14 | BACK COVER | 1214 2899 00 | 1 |
| 15 | TOP COVER | 1214 2899 01 | 1 |
| 16* | BOLT | 2313 1216 01 | 4 |
| 17* | WASHER | 2313 1381 00 | 8 |
| 18* | NUT | 0313 1305 00 | 4 |
| 19 | BOLT | 2313 1202 00 | 24 |
| 20 | WASHER | 0313 1352 00 | 44 |
| 21 | NUT | 0313 1303 00 | 20 |
| 22 | SCREW | 1313 1246 00 | 10 |
| 23 | BOLT | 0313 1205 00 | 8 |
| 24 | LOCK | 1314 2025 00 | 4 |
| 25* | SAFETY VALVE (7 Bar) | 0311 1300 00 | 1 |
| 25* | SAFETY VALVE (10 Bar) | 0311 1303 00 | 1 |
| 25* | SAFETY VALVE (13 Bar) | 0311 1304 00 | 1 |
| 26* | VALVE | 0313 1551 00 | 1 |
| 27* | NIPPLE | 1313 1078 00 | 1 |
| 28* | DRAIN VALVE | 0313 1550 01 | 1 |
| 29* | SQUARE NUT | 1313 1304 00 | 12 |

(*) THEY ARE NOT USED IN MODEL WITHOUT RECEIVER

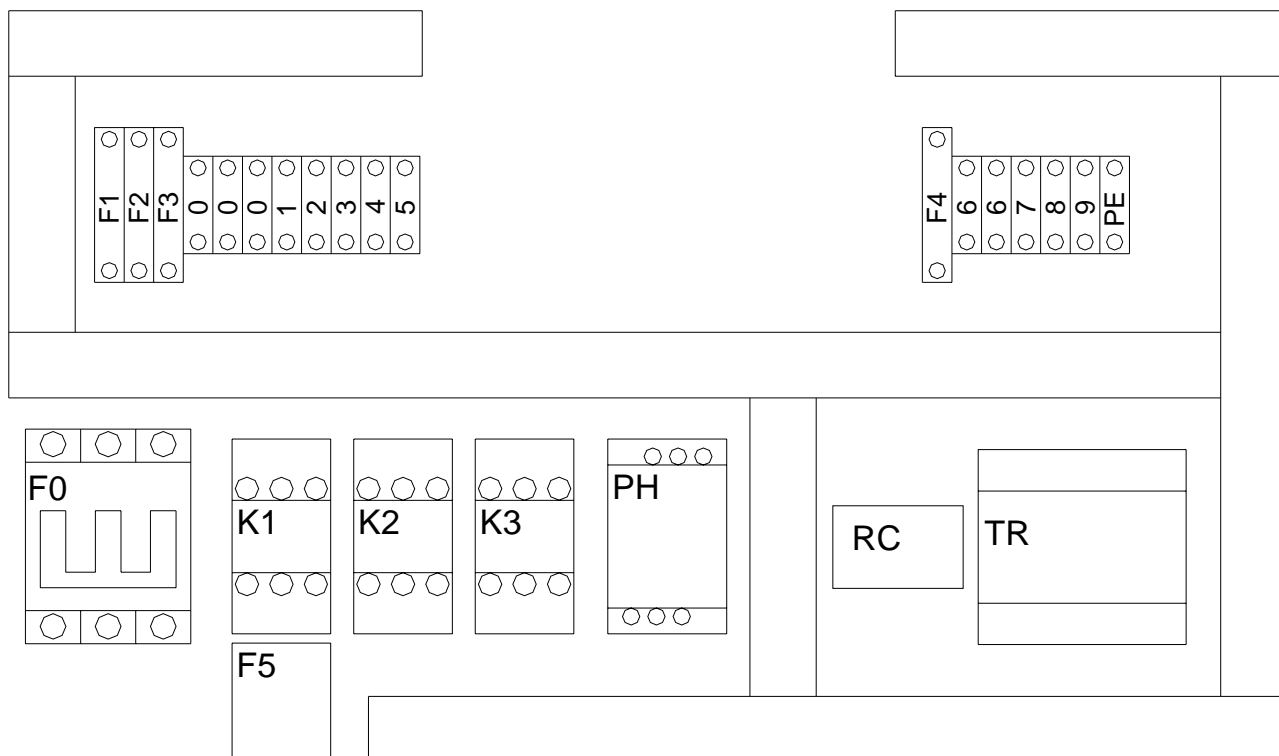
HGS 15 & 20

INDEX

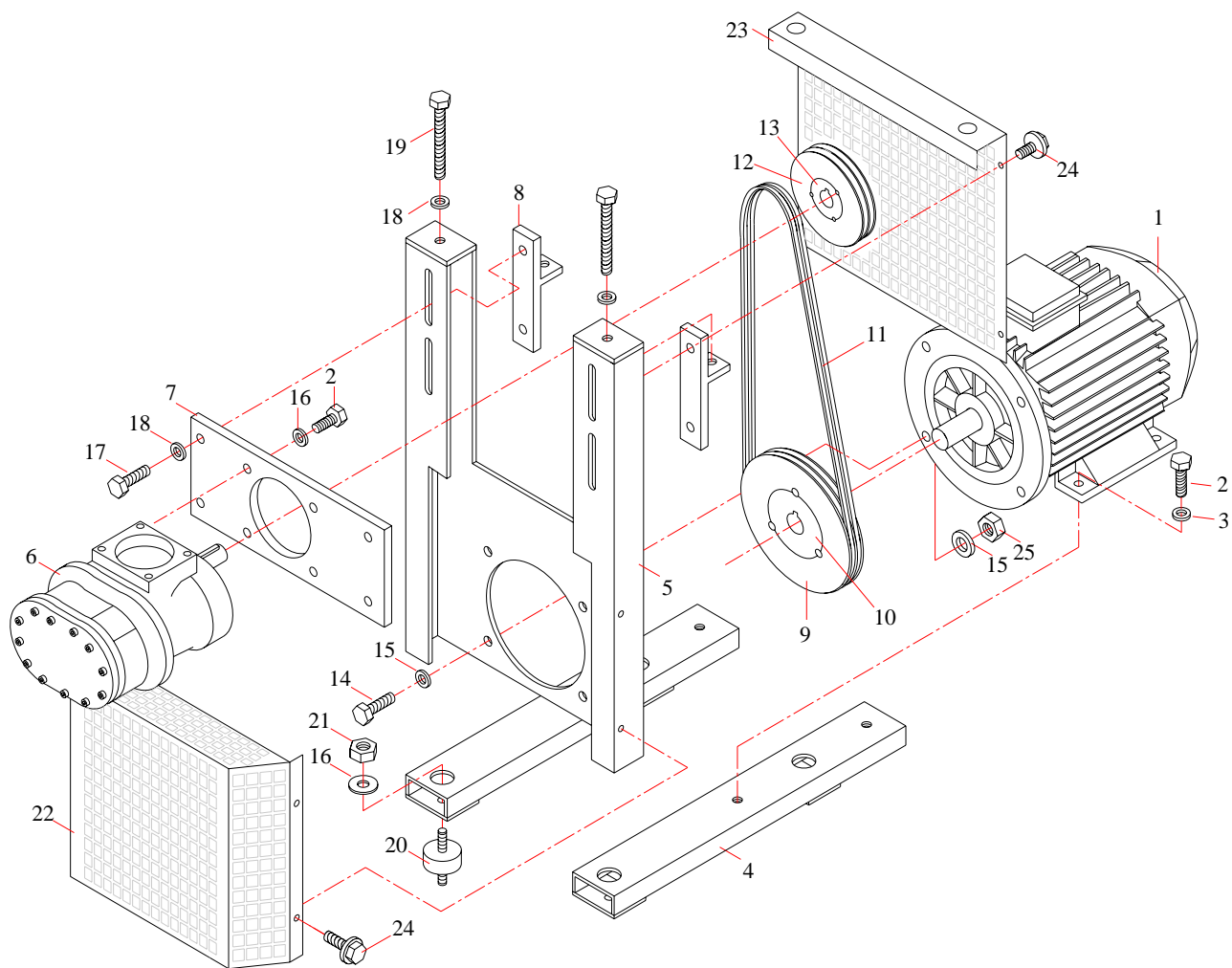
| | | |
|------------|--|-----------|
| 1.1 | ELECTRIC BOX - HGS 15 | 35 |
| 1.2 | ELECTRIC BOX - HGS 20 | 36 |
| 2.1 | DRIVING SYSTEM - HGS 15 | 37 |
| 2.2 | DRIVING SYSTEM - HGS 20 | 38 |
| 3.0 | INTAKE SYSTEM - HGS 15 / 20 | 39 |
| 4.0 | PRESSURE SYSTEM - HGS 15 / 20 | 40 |
| 5.1 | COOLING SYSTEM - HGS 15 / 20 | 41 |
| 5.2 | COOLING SYSTEM (WITHOUT RECEIVER) - HGS 15 / 20 | 42 |
| 6.1 | AIR RECEIVER & CANOPY - HGS 15 | 43 |
| 6.2 | AIR RECEIVER & CANOPY - HGS 20 | 44 |



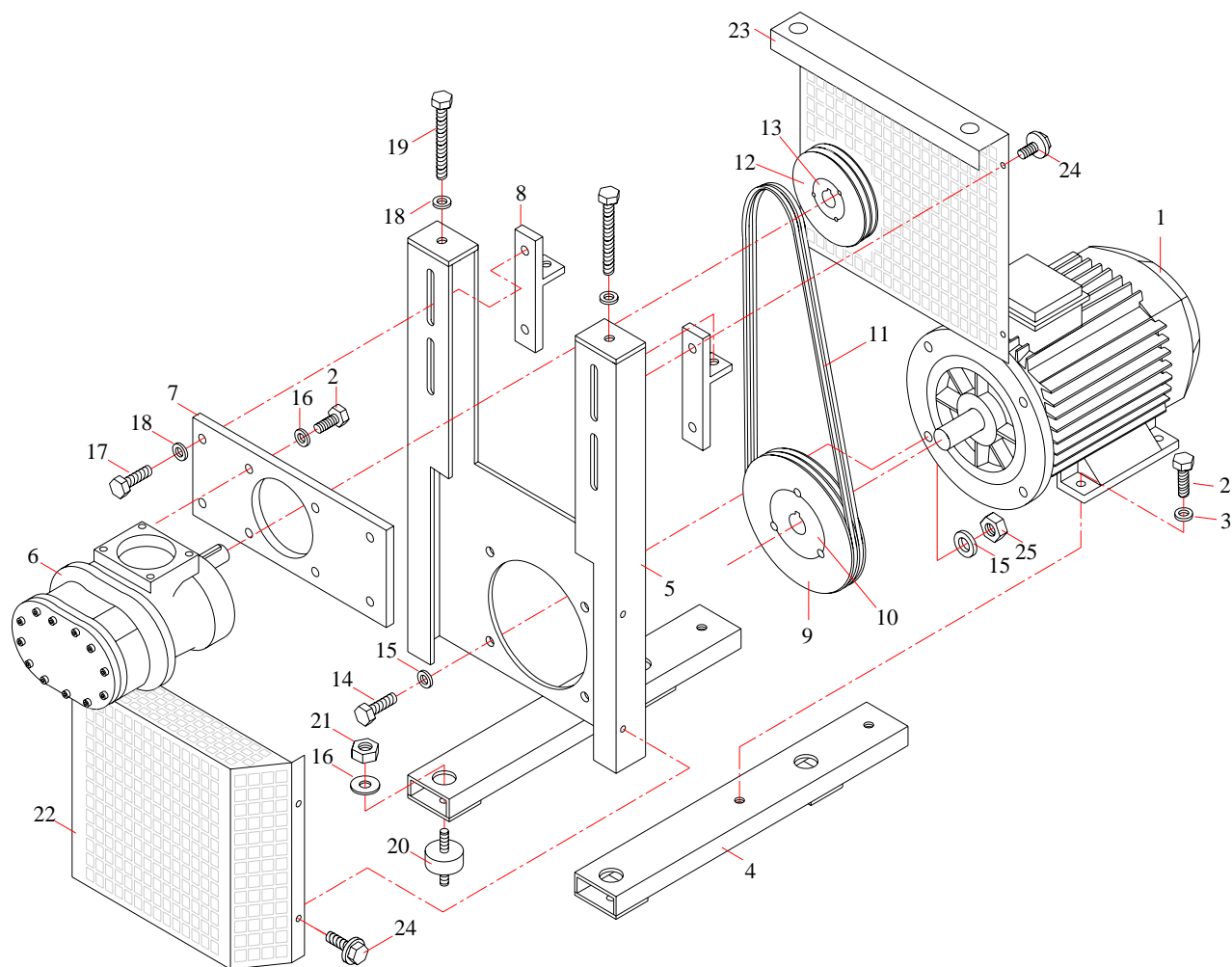
| REF. | PART NAME | COD. | QTY. |
|-----------------|-----------------------------|--------------|------|
| L1-L2-L3 | PHASES | - | - |
| PE | PROTECTIVE EARTH | 0315 1079 00 | 1 |
| S1 | MAIN SWITCH | - | - |
| F0 | MAIN INLET FUSE | 1600 1402 00 | 1 |
| F0 | MAIN LOAD SEPERATOR | 1312 2182 01 | 1 |
| K1 | CONTACTOR MAIN | 1600 1103 00 | 1 |
| K2 | CONTACTOR DELTA | 1600 1103 00 | 1 |
| K3 | CONTACTOR STAR | 1600 1101 00 | 1 |
| F5 | OVERLOAD RELAY MAIN MOTOR | 1600 1209 00 | 1 |
| M1 | MAIN MOTOR | 1312 1009 02 | 1 |
| PH | PHASES CONTROLLER UNIT | 1312 3051 00 | 1 |
| F1-F2 | FUSE TRANSFORMER INLET | 1312 2180 03 | 2 |
| F3 | FUSE TRANSFORMER 220 VAC | 1312 2180 03 | 1 |
| F4 | FUSE TRANSFORMER 12 VAC | 1312 2180 04 | 1 |
| F1-F2- F3-F4 | TERMINAL WITH FUSE | 1312 2176 01 | 4 |
| TR | TRANSFORMER | 1312 2290 01 | 1 |
| RC | LINE RC FILTER | 1312 2001 00 | 1 |
| Y1 | SOLENOID VALVE LOAD CONTROL | 0312 3029 00 | - |
| S2 | PRESSURE SWITCH | 1312 3001 01 | 1 |
| TMP | TEMPERATURE SENSOR | 1312 2052 00 | 1 |
| KU | CONTROLLER UNIT | 1314 2171 14 | 1 |
| X1 | TERMINAL (STARTER BOX) | 1312 2227 00 | 14 |
| X2 | TERMINAL (CONTROLLER UNIT) | - | - |



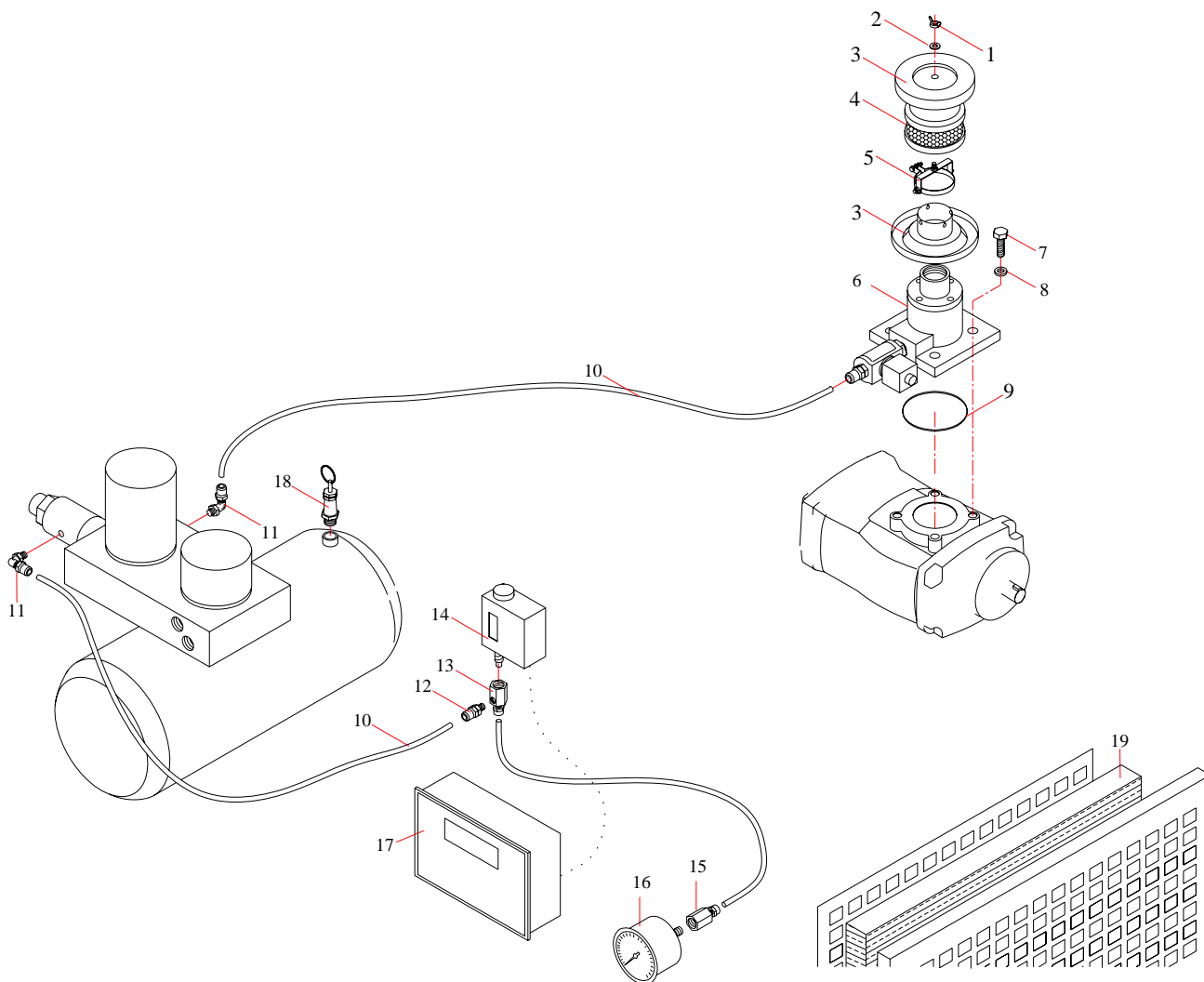
| REF. | PART NAME | COD. | QTY. |
|-----------------|-----------------------------|--------------|------|
| L1-L2-L3 | PHASES | - | - |
| PE | PROTECTIVE EARTH | 0315 1079 00 | 1 |
| S1 | MAIN SWITCH | - | - |
| F0 | MAIN INLET FUSE | 1600 1402 00 | 1 |
| F0 | MAIN LOAD SEPERATOR | 1312 2182 01 | 1 |
| K1 | CONTACTOR MAIN | 1600 1104 00 | 1 |
| K2 | CONTACTOR DELTA | 1600 1104 00 | 1 |
| K3 | CONTACTOR STAR | 1600 1103 00 | 1 |
| F5 | OVERLOAD RELAY MAIN MOTOR | 1600 1210 00 | 1 |
| M1 | MAIN MOTOR | 0312 1010 03 | 1 |
| PH | PHASES CONTROLLER UNIT | 1312 3051 00 | 1 |
| F1-F2 | FUSE TRANSFORMER INLET | 1312 2180 03 | 2 |
| F3 | FUSE TRANSFORMER 220 VAC | 1312 2180 03 | 1 |
| F4 | FUSE TRANSFORMER 12 VAC | 1312 2180 04 | 1 |
| F1-F2- F3-F4 | TERMINAL WITH FUSE | 1312 2176 01 | 4 |
| TR | TRANSFORMER | 1312 2290 01 | 1 |
| RC | LINE RC FILTER | 1312 2001 00 | 1 |
| Y1 | SOLENOID VALVE LOAD CONTROL | 0312 3029 00 | - |
| S2 | PRESSURE SWITCH | 1312 3001 01 | 1 |
| TMP | TEMPERATURE SENSOR | 1312 2052 00 | 1 |
| KU | CONTROLLER UNIT | 1314 2171 14 | 1 |
| X1 | TERMINAL (STARTER BOX) | 1312 2227 00 | 14 |
| X2 | TERMINAL (CONTROLLER UNIT) | - | - |



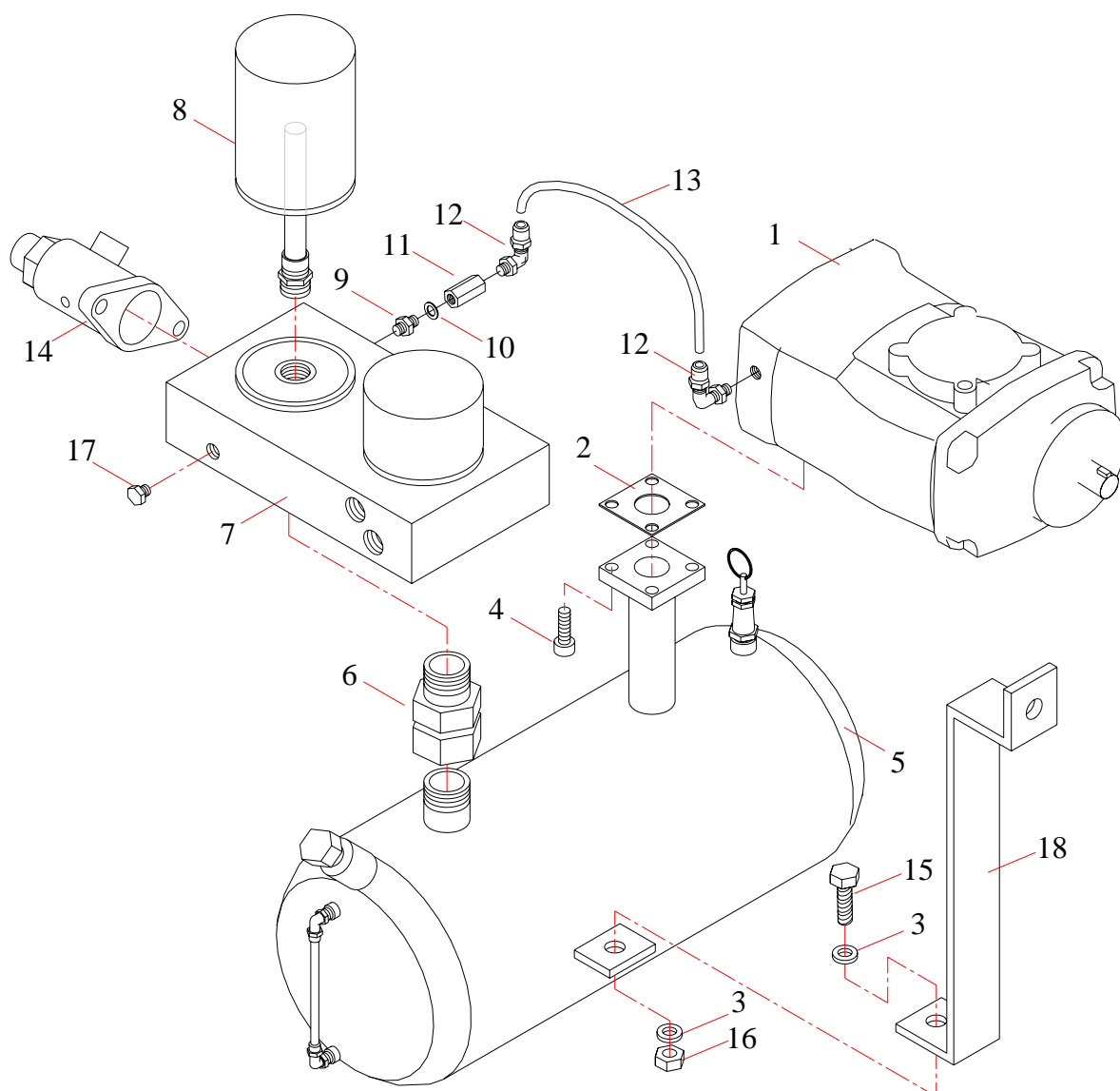
| REF. | PART NAME | COD. | QTY. |
|------|------------------------|--------------|------|
| 1 | MOTOR | 1312 1009 02 | 1 |
| 2 | BOLT | 0313 1219 00 | 4 |
| 3 | WASHER | 2313 1390 00 | 4 |
| 4 | FRAME MOTOR (RIGHT) | 1414 1996 01 | 1 |
| 4 | FRAME MOTOR (LEFT) | 1414 1996 02 | 1 |
| 5 | FRAME AIREND | 1214 2279 00 | 1 |
| 6 | AIREND UNIT | 1321 1000 00 | 1 |
| 7 | ADAPTOR FLANGE | 1414 2205 00 | 1 |
| 8 | TENSION PART | 1214 2204 00 | 2 |
| 9 | PULLEY MOTOR (7 Bar) | 1312 4007 00 | 1 |
| 9 | PULLEY MOTOR (10 Bar) | 1312 4006 00 | 1 |
| 9 | PULLEY MOTOR (13 Bar) | 1312 3998 00 | 1 |
| 10 | BUSH MOTOR (7 Bar) | 1312 4079 00 | 1 |
| 10 | BUSH MOTOR (10-13 Bar) | 1312 4090 00 | 1 |
| 11 | BELT (7 Bar) | 1312 4209 01 | 2 |
| 11 | BELT (10 Bar) | 1312 4202 00 | 2 |
| 11 | BELT (13 Bar) | 1312 4201 00 | 2 |
| 12 | PULLEY AIREND (7 Bar) | 1312 4069 00 | 1 |
| 12 | PULLEY AIREND (10 Bar) | 1312 4000 00 | 1 |
| 12 | PULLEY AIREND (13 Bar) | 1312 4068 00 | 1 |
| 13 | BUSH AIREND | 1312 4075 00 | 1 |
| 14 | BOLT | 0313 1231 00 | 4 |
| 15 | WASHER | 1313 1360 00 | 8 |
| 16 | WASHER | 2313 1381 00 | 8 |
| 17 | BOLT | 2313 1211 00 | 4 |
| 18 | WASHER | 0313 1353 00 | 6 |
| 19 | BOLT | 2313 1259 00 | 2 |
| 20 | VIBRATION PAD | 1213 1790 00 | 4 |
| 21 | NUT | 0313 1305 00 | 4 |
| 22 | GUARD (PULLEY MOTOR) | 1411 2007 00 | 1 |
| 23 | GUARD (PULLEY AIREND) | 1411 2007 01 | 1 |
| 24 | BOLT | 0313 1204 01 | 6 |
| 25 | NUT | 0313 1308 00 | 4 |



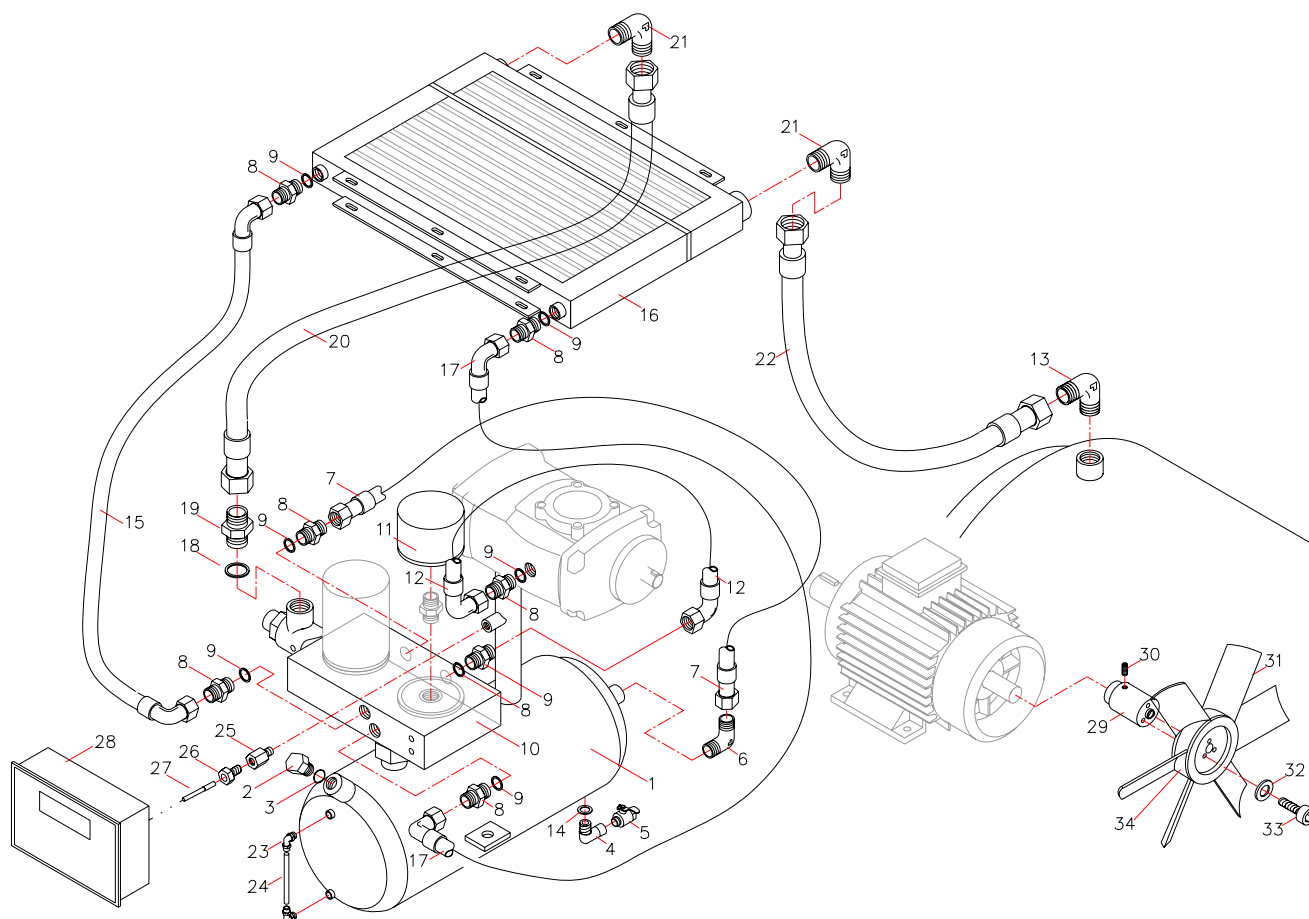
| REF. | PART NAME | COD. | QTY. |
|------|--------------------------|--------------|------|
| 1 | MOTOR | 0312 1010 03 | 1 |
| 2 | BOLT | 0313 1219 00 | 4 |
| 3 | WASHER | 2313 1390 00 | 4 |
| 4 | FRAME MOTOR (RIGHT) | 1414 1996 01 | 1 |
| 4 | FRAME MOTOR (LEFT) | 1414 1996 02 | 1 |
| 5 | FRAME AIREND | 1214 2279 00 | 1 |
| 6 | AIREND UNIT | 1321 1000 00 | 1 |
| 7 | ADAPTOR FLANGE | 1414 2205 00 | 1 |
| 8 | TENSION PART | 1214 2204 00 | 2 |
| 9 | PULLEY MOTOR (7 Bar) | 1312 3988 00 | 1 |
| 9 | KASNAK MOTOR (10-13 Bar) | 1312 4007 01 | 1 |
| 10 | BUSH MOTOR | 1312 4090 00 | 1 |
| 11 | BELT | 1312 4209 01 | 3 |
| 12 | PULLEY AIREND (7-10 Bar) | 1312 4068 03 | 1 |
| 12 | PULLEY AIREND (13 Bar) | 1312 4063 00 | 1 |
| 13 | BUSH AIREND | 1312 4075 00 | 1 |
| 14 | BOLT | 0313 1231 00 | 4 |
| 15 | WASHER | 1313 1360 00 | 8 |
| 16 | WASHER | 2313 1381 00 | 8 |
| 17 | BOLT | 2313 1211 00 | 4 |
| 18 | WASHER | 0313 1353 00 | 6 |
| 19 | BOLT | 2313 1259 00 | 2 |
| 20 | VIBRATION PAD | 1213 1790 00 | 4 |
| 21 | NUT | 0313 1305 00 | 4 |
| 22 | GUARD (PULLEY MOTOR) | 1411 2007 00 | 1 |
| 23 | GUARD (PULLEY AIREND) | 1411 2007 01 | 1 |
| 24 | BOLT | 0313 1204 01 | 6 |
| 25 | SOMUN | 0313 1308 00 | 4 |



| REF. | PART NAME | COD. | QTY. |
|------|-----------------------|--------------|------|
| 1 | NUT | 1313 1325 00 | 1 |
| 2 | WASHER | 0313 1352 00 | 1 |
| 3 | FILTER COVER | 1311 1201 01 | 1 |
| 4 | FILTER ELEMENT | 1311 1210 00 | 1 |
| 5 | CLAMP | - | 1 |
| 6 | INTAKE VALVE | 1321 1012 00 | 1 |
| 7 | BOLT | 2313 1210 00 | 4 |
| 8 | WASHER | 0313 1353 00 | 4 |
| 9 | O'RING | - | 1 |
| 10 | TUBE (PA) | 1313 1044 00 | 3 |
| 11 | ELBOW | 1313 1121 00 | 2 |
| 12 | CONECTOR PNEU. | 1313 1125 00 | 1 |
| 13 | ADAPTOR | 1313 1451 00 | 1 |
| 14 | PRESSURE SWITCH | 1312 3001 01 | 1 |
| 15 | ADAPTOR | 1313 1452 00 | 1 |
| 16 | PRESSURE GAUGE | 1312 3010 00 | 1 |
| 17 | CONTROLLER UNIT | 1314 2171 14 | 1 |
| 18 | SAFETY VALVE (7 Bar) | 0311 1300 00 | 1 |
| 18 | SAFETY VALVE (10 Bar) | 0311 1303 00 | 1 |
| 18 | SAFETY VALVE (13 Bar) | 0311 1304 00 | 1 |
| 19 | PANEL FILTER | 0311 1221 00 | 1 |



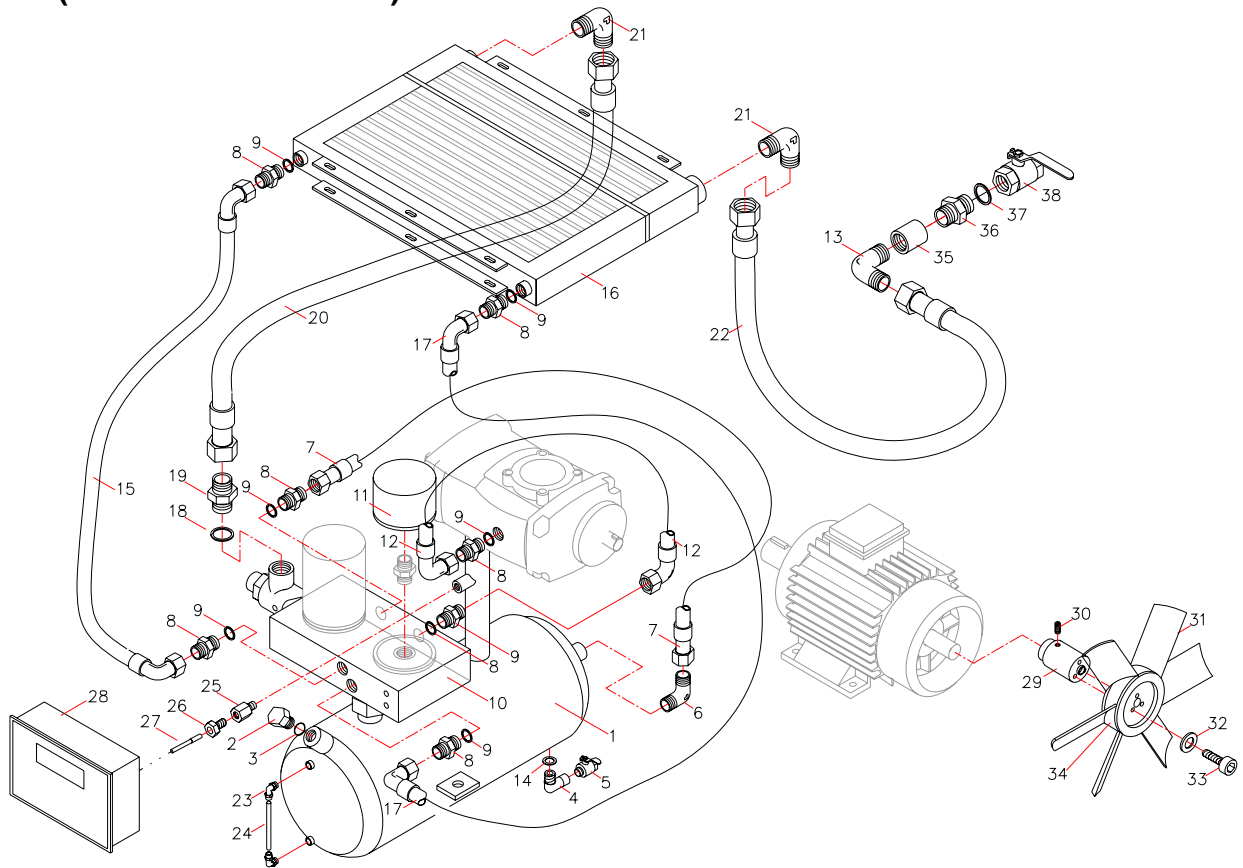
| REF. | PART NAME | COD. | QTY. |
|------|---------------------|--------------|------|
| 1 | AIREND UNIT | 1321 1000 00 | 1 |
| 2 | GASKET | 1313 1599 00 | 1 |
| 3 | WASHER | 0313 1353 00 | 2 |
| 4 | BOLT | 0313 1210 00 | 4 |
| 5 | OIL TANK | 1414 2193 02 | 1 |
| 6 | ADAPTOR | 2313 1128 01 | 1 |
| 7 | MULTIBLOCK | 1321 1125 00 | 1 |
| 8 | SEPARATOR ELEMENT | 1311 1250 01 | 1 |
| 9 | NIPPLE | 2313 1100 00 | 1 |
| 10 | WASHER | 1313 1372 00 | 1 |
| 11 | CHECK VALVE | 2311 1437 00 | 1 |
| 12 | ELBOW | 1313 1121 00 | 2 |
| 13 | TUBA (PA) | 1313 1044 00 | 1 |
| 14 | MIN. PRESSURE VALVE | - | 1 |
| 15 | BOLT | 2313 1210 00 | 1 |
| 16 | NUT | 0313 1304 00 | 2 |
| 17 | PLUG | 1214 2297 02 | 1 |
| 18 | SUPPORT | 1314 1212 01 | 1 |



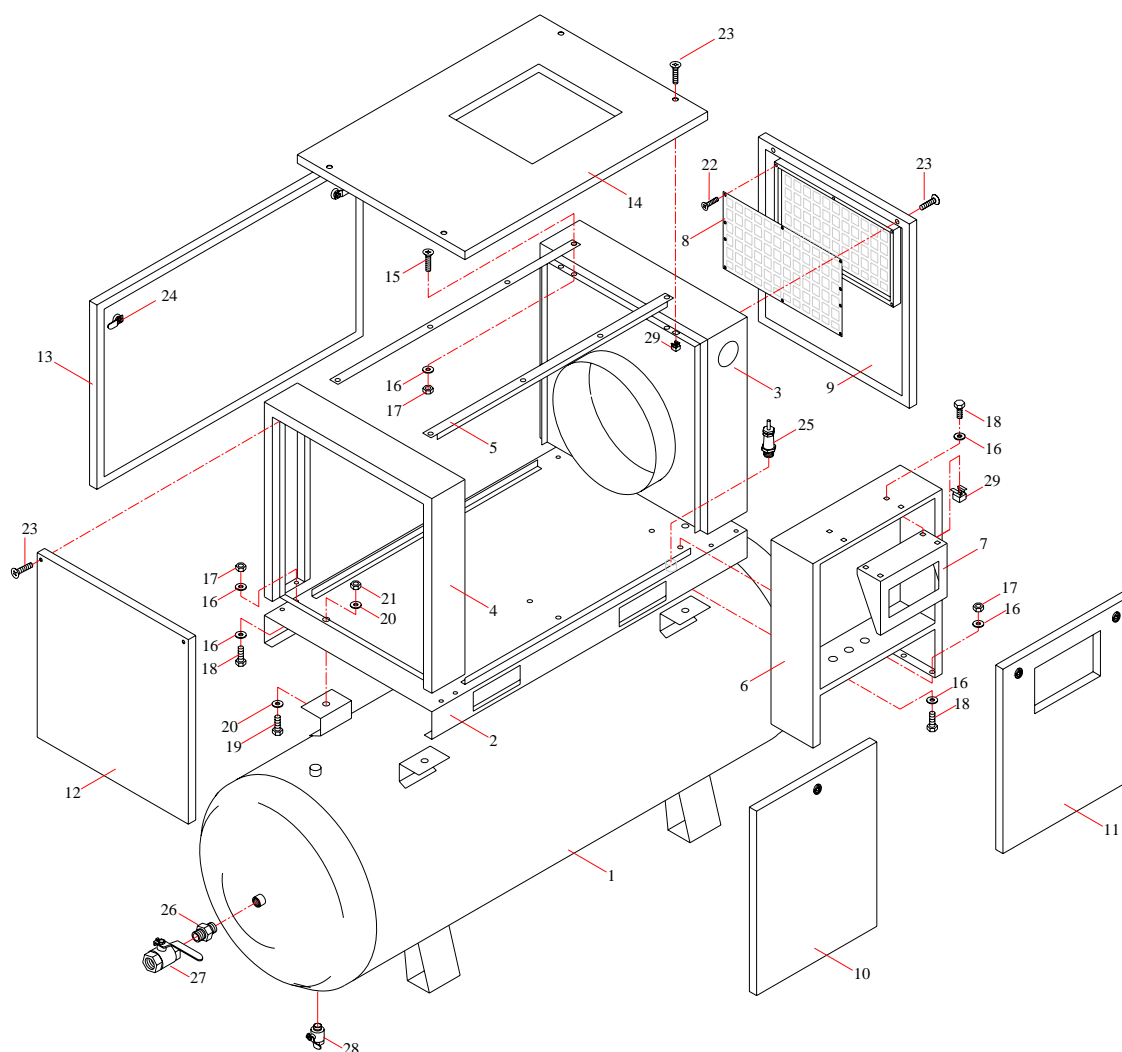
| REF. | PART NAME | COD. | QTY. |
|------|------------------------|--------------|------|
| 1 | OIL TANK | 1414 2193 02 | 1 |
| 2 | PLUG | 1214 2297 01 | 1 |
| 3 | O'RING | 1313 1677 00 | 1 |
| 4 | ELBOW | 0313 1113 00 | 1 |
| 5 | DRAIN VALVE | 0313 1552 00 | 1 |
| 6 | ELBOW | 1313 1123 00 | 1 |
| 7 | HOSE | 1313 0901 04 | 1 |
| 8 | NIPPLE | 0313 1072 00 | 7 |
| 9 | WASHER | 1313 1374 00 | 7 |
| 10 | MULTIBLOCK | 1321 1125 00 | 1 |
| 11 | OIL FILTER ELEMENT | 1311 1230 00 | 1 |
| 12 | HOSE | 1313 0901 03 | 1 |
| 13 | ELBOW | 1313 1124 00 | 1 |
| 14 | WASHER | 1313 1373 00 | 1 |
| 15 | HOSE | 1313 1001 00 | 1 |
| 16 | COOLER (OESSE) HGS 15 | 1321 1100 02 | 1 |
| 16 | COOLER (EMMEGI) HGS 15 | 1321 1100 00 | 1 |
| 16 | COOLER (OESSE) HGS 20 | 1321 1101 01 | 1 |
| 16 | COOLER (EMMEGI) HGS 20 | 1321 1101 00 | 1 |
| 17 | HOSE | 1313 0901 02 | 1 |
| 18 | WASHER | 0313 1376 00 | 1 |
| 19 | NIPPLE | 1313 1075 00 | 1 |
| 20 | HOSE | 1313 0901 01 | 1 |
| 21 | ELBOW (OESSE) | 1313 1124 03 | 2 |
| 21 | ELBOW (EMMEGI) | 1313 1124 00 | 2 |
| 22 | HOSE | 1313 0901 00 | 1 |
| 23 | ELBOW PNEU. | 0313 1115 00 | 2 |
| 24 | TUBE (PA) | 1313 1045 00 | 1 |
| 25 | PROBE COVER | 1312 3016 02 | 1 |
| 26 | PROBE NUT | 1312 3018 00 | 1 |
| 27 | TEMPERATURE PROBE | 1312 3052 00 | 1 |
| 28 | CONTROLLER UNIT | 1314 2171 14 | 1 |
| 29 | ADAPTOR | 1313 1402 00 | 1 |
| 30 | BOLT | 2313 1260 00 | 1 |
| 31 | FAN BLADE | 1311 1138 02 | 6 |
| 32 | WASHER | 0313 1352 00 | 3 |
| 33 | BOLT | 2313 1236 00 | 3 |
| 34 | FAN CENTER | 1311 1138 00 | 2 |

5.2 COOLING SYSTEM (WITHOUT RECEIVER)

HGS 15 / 20

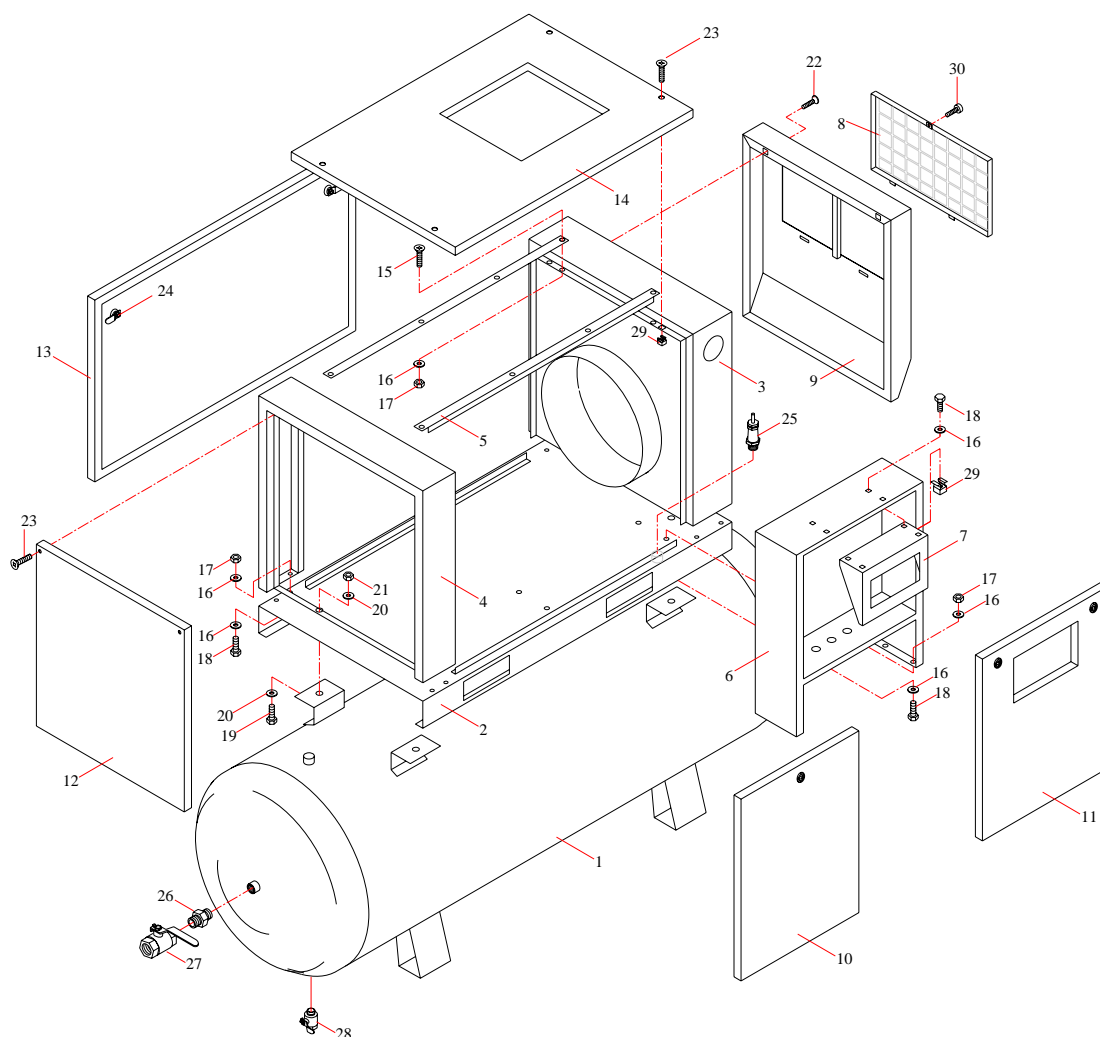


| REF. | PART NAME | COD. | QTY. |
|------|------------------------|--------------|------|
| 1 | OIL TANK | 1414 2193 02 | 1 |
| 2 | PLUG | 1214 2297 01 | 1 |
| 3 | O'RING | 1313 1677 00 | 1 |
| 4 | ELBOW | 0313 1113 00 | 1 |
| 5 | DRAIN VALVE | 0313 1552 00 | 1 |
| 6 | ELBOW | 1313 1123 00 | 1 |
| 7 | HOSE | 1313 0901 04 | 1 |
| 8 | NIPPLE | 0313 1072 00 | 7 |
| 9 | WASHER | 1313 1374 00 | 7 |
| 10 | MULTIBLOCK | 1321 1125 00 | 1 |
| 11 | OIL FILTER ELEMENT | 1311 1230 00 | 1 |
| 12 | HOSE | 1313 0901 03 | 1 |
| 13 | ELBOW | 1313 1124 00 | 1 |
| 14 | WASHER | 1313 1373 00 | 1 |
| 15 | HOSE | 1313 1001 00 | 1 |
| 16 | COOLER (OESSE) HGS 15 | 1321 1100 02 | 1 |
| 16 | COOLER (EMMEGI) HGS 15 | 1321 1100 00 | 1 |
| 16 | COOLER (OESSE) HGS 20 | 1321 1101 01 | 1 |
| 16 | COOLER (EMMEGI) HGS 20 | 1321 1101 00 | 1 |
| 17 | HOSE | 1313 0901 02 | 1 |
| 18 | WASHER | 0313 1376 00 | 1 |
| 19 | NIPPLE | 1313 1075 00 | 1 |
| 20 | HOSE | 1313 0901 01 | 1 |
| 21 | ELBOW (OESSE) | 1313 1124 03 | 2 |
| 21 | ELBOW (EMMEGI) | 1313 1124 00 | 2 |
| 22 | HOSE | 1313 0901 00 | 1 |
| 23 | ELBOW PNEU. | 0313 1115 00 | 2 |
| 24 | TUBE (PA) | 1313 1045 00 | 1 |
| 25 | PROBE COVER | 1312 3016 02 | 1 |
| 26 | NUT | 1312 3018 00 | 1 |
| 27 | PROBE | 1312 3052 00 | 1 |
| 28 | CONTROLLER UNIT | 1314 2171 14 | 1 |
| 29 | ADAPTOR | 1313 1402 00 | 1 |
| 30 | BOLT | 2313 1260 00 | 1 |
| 31 | FAN BLADE | 1311 1138 02 | 6 |
| 32 | WASHER | 0313 1352 00 | 3 |
| 33 | BOLT | 2313 1236 00 | 3 |
| 34 | FAN CENTER | 1311 1138 00 | 2 |
| 35 | ADAPTOR | 0313 1454 00 | 1 |
| 36 | NIPPLE | 1313 1078 00 | 1 |
| 37 | WASHER | 1313 1375 00 | 1 |
| 38 | VALVE | 0313 1551 00 | 1 |



| REF. | PART NAME | COD. | QTY. |
|------|---------------------------|--------------|------|
| 1* | AIR RECEIVER | 0300 2417 00 | 1 |
| 2 | BOTTOM FRAME | 1314 2198 00 | 1 |
| 3 | RIGHT POLE GROUP | 1214 2898 00 | 1 |
| 4 | LEFT POLE GROUP | 1214 2897 07 | 1 |
| 5 | COOLER SUPPORT | - | 2 |
| 6 | STARTER CABINET | 1312 2416 00 | 1 |
| 7 | PLC BOARD | 1214 2897 03 | 1 |
| 8 | P*RE FILTER COVER | 1214 2897 06 | 1 |
| 9 | FRONT COVER (P*RE FILTER) | 1214 2898 03 | 1 |
| 10 | FRONT LEFT COVER | 1214 2897 01 | 1 |
| 11 | COVER STARTER CABINET | 1214 2897 02 | 1 |
| 12 | RIGHT SIDE COVER | 1214 2897 04 | 1 |
| 13 | BACK COVER | 1214 2897 00 | 1 |
| 14 | COOLER COWL | 1214 2897 05 | 1 |
| 15 | BOLT | 2313 1241 00 | 8 |
| 16 | WASHER | 0313 1352 00 | 32 |
| 17 | NUT | 0313 1303 00 | 20 |
| 18 | BOLT | 2313 1202 00 | 16 |
| 19* | BOLT | 2313 1216 01 | 4 |
| 20* | WASHER | 2313 1381 00 | 8 |
| 21* | NUT | 0313 1305 00 | 4 |
| 22 | SCREW | 1313 1246 00 | 10 |
| 23 | BOLT | 0313 1205 00 | 8 |
| 24 | LOCK | 1314 2025 00 | 5 |
| 25* | SAFETY VALVE (7 Bar) | 0311 1300 00 | 1 |
| 25* | SAFETY VALVE (10 Bar) | 0311 1303 00 | 1 |
| 25* | SAFETY VALVE (13 Bar) | 0311 1304 00 | 1 |
| 26* | NIPPLE | 1313 1078 00 | 1 |
| 27* | VALVE | 0313 1551 00 | 1 |
| 28* | DRAIN VALVE | 0313 1550 01 | 1 |
| 29 | SQUARE NUT | 1313 1304 00 | 12 |

(*) THEY ARE NOT USED IN MODEL WITHOUT RECEIVER



| REF. | PART NAME | COD. | QTY. |
|------|---------------------------|--------------|------|
| 1* | AIR RECEIVER | 0300 2417 00 | 1 |
| 2 | BOTTOM FRAME | 1314 2198 00 | 1 |
| 3 | RIGHT POLE GROUP | 1214 2898 00 | 1 |
| 4 | LEFT POLE GROUP | 1214 2897 07 | 1 |
| 5 | COOLER SUPPORT | - | 2 |
| 6 | STARTER CABINET | 1312 2416 00 | 1 |
| 7 | PLC BOARD | 1214 2897 03 | 1 |
| 8 | P*RE FILTER COVER | 1214 2897 10 | 1 |
| 9 | FRONT COVER (P*RE FILTER) | 1214 2898 10 | 1 |
| 10 | FRONT LEFT COVER | 1214 2897 01 | 1 |
| 11 | COVER STARTER CABINET | 1214 2897 02 | 1 |
| 12 | RIGHT SIDE COVER | 1214 2897 04 | 1 |
| 13 | BACK COVER | 1214 2897 00 | 1 |
| 14 | COOLER COWL | 1214 2897 05 | 1 |
| 15 | BOLT | 2313 1241 00 | 8 |
| 16 | WASHER | 0313 1352 00 | 32 |
| 17 | NUT | 0313 1303 00 | 20 |
| 18 | BOLT | 2313 1202 00 | 16 |
| 19* | BOLT | 2313 1216 01 | 4 |
| 20* | WASHER | 2313 1381 00 | 8 |
| 21* | NUT | 0313 1305 00 | 4 |
| 22 | BOLT | 0313 1203 00 | 2 |
| 23 | BOLT | 0313 1205 00 | 6 |
| 24 | LOCK | 1314 2025 00 | 5 |
| 25* | SAFETY VALVE (7 Bar) | 0311 1300 00 | 1 |
| 25* | SAFETY VALVE (10 Bar) | 0311 1303 00 | 1 |
| 25* | SAFETY VALVE (13 Bar) | 0311 1304 00 | 1 |
| 26 | NIPPLE | 1313 1078 00 | 1 |
| 27* | VALVE | 0313 1551 00 | 1 |
| 28* | DRAIN VALVE | 0313 1550 01 | 1 |
| 29 | SQUARE NUT | 1313 1304 00 | 12 |
| 30 | BOLT | 2313 1236 00 | 1 |

(*) THEY ARE NOT USED IN MODEL WITHOUT RECEIVER